

Software de monitorizare camere de supraveghere
General CMS (Windows)

Manual de utilizare



INSTALARE:

Fisierul pentru instalarea software-ului il puteti gasi pe CD-ul inclus in pachet sau pe pagina produsului.

RECOMANDARI:

Instalarea, configurarea si punerea in functiune a acestui dispozitiv trebuie facute in conformitate cu legislatia in vigoare si de catre personal abilitat ce poate interpreta corect notiunile si termenii tehnici, si poate pune in practica procedurile tehnice/IT descrise in manual.

OPERATIUNI DE BAZA:

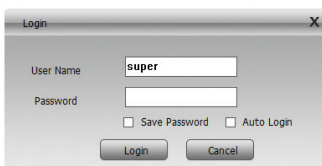
- Alimentati dispozitivul de supraveghere la o sursa de curent
- Conectati dispozitivul de supraveghere la Internet (la router) folosind un cablu Ethernet
- Conectati PC-ul la Internet

Nota: Atat dispozitivul de supraveghere cat si PC-ul trebuie sa fie in aceeasi retea (conectate la acelasi router).

AUTENTIFICARE:

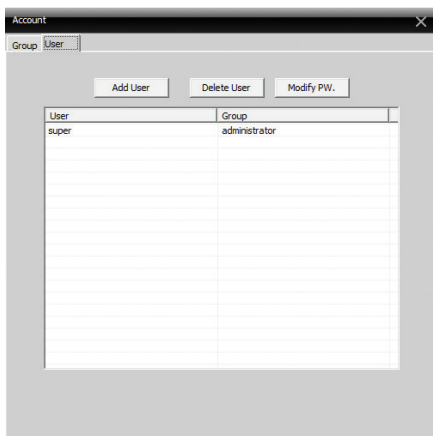
Deschideti software-ul CMS.

In interfata de autentificare completati numele de utilizator si parola. Implicit, utilizatorul "super" (administrator) nu este protejat de parola.



Dialog box titled "Login" with fields for "User Name" (containing "super") and "Password". Below the fields are checkboxes for "Save Password" and "Auto Login". At the bottom are "Login" and "Cancel" buttons.

*Nota: Dupa prima autentificare va recomandam sa schimbati parola de acces. Accesati **System (Sistem) - Account (Cont) - User (Utilizator)**:*

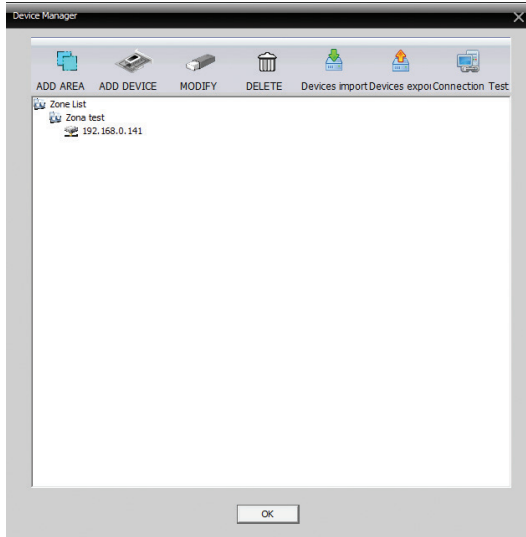


Account management interface showing a table with columns "User" and "Group". The "super" user is listed with the "administrator" group. Buttons for "Add User", "Delete User", and "Modify PW." are visible above the table.

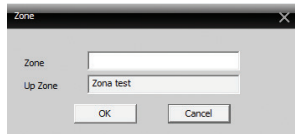
| User | Group |
|-------|---------------|
| super | administrator |
| | |
| | |
| | |
| | |
| | |
| | |
| | |
| | |
| | |
| | |
| | |
| | |
| | |
| | |
| | |
| | |
| | |
| | |
| | |
| | |
| | |

ADAUGARE CAMERA PRIN CAUTARE AUTOMATA IN RETEA:

1. Accesati **System (Sistem) - Device manager (Administrare dispozitive)**:

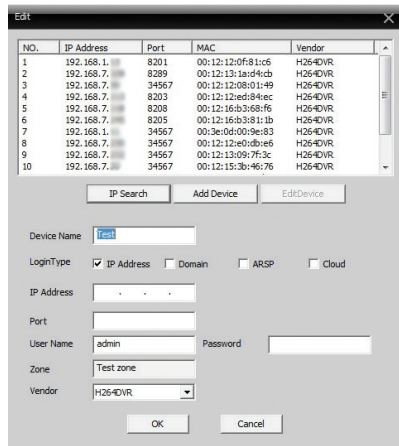


2. Click **Add area (Adauga zona)**:



Dati un nume zonei adaugate.

3. Click pe zona recent creata si apoi pe **Add device (Adauga dispozitiv)**. In interfața care se deschide, bifati **IP Address** apoi click pe **IP Search** pentru a cauta camerele din rețea:



4. Selectati camera care va intereseaza si completati parola, apoi click pe **Add device**. Acum camera poate fi vazuta in interfata de previzualizare.

*Nota: Implicit, numele de utilizator **admin** nu este protejat de nici o parola. Lasati necompletat campul **Password**. Pentru a modifica parola camerei accesati **System - Remote config - Advanced - Account**.*

ADAUGARE CAMERA PRIN CAUTARE IN CLOUD:

1. In interfata de adaugare a camerei, bifati **Cloud**:

| NO. | IP Address | Port | MAC | Vendor |
|-----|------------|------|-----|--------|
|-----|------------|------|-----|--------|

IP Search Add Device EditDevice

Device Name: Test camera

LoginType: IP Address Domain ARSP Cloud

Serial ID:

User Name: admin Password:

Zone: Test zone

Vendor: H264DVR

OK Cancel

2. Completati campurile **Serial ID** si **Password**.

Nota: Serial ID poate fi gasit pe eticheta lipita pe camera sau folosind aplicatia Device Manager (fisierul de instalare a aplicatiei se gaseste pe CD-ul inclus in pachet), in functie de modelul camerei.

DESCRIERE INTERFATA PRINCIPALA:

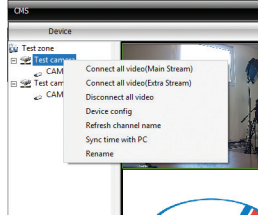
| Time | Date | Device | Chan | User | Describe |
|-------------|------------------|---------------|------|-------|---------------------------------------|
| Video | 2017-01-20 09:07 | Test camera 1 | 1 | admin | Connect successful |
| Video | 2017-01-20 09:20 | Test camera 1 | 1 | admin | Connect successful |
| Video | 2017-01-20 09:21 | Test camera 1 | 1 | admin | Connect failed! Can't find the device |
| System Oper | 2017-01-20 09:46 | Test camera 1 | 1 | admin | Disconnect success & error |
| Video | 2017-01-20 09:50 | Test camera 1 | 1 | admin | Connect successful |

1. Lista camere
2. Zona previzualizare canale
3. Ora / Data
4. PTZ (Pan, Til, Zoom)
5. Meniu

ZONA LISTA CAMERE (DEVICE):

In aceasta zona puteti vedea organizarea zonelor si a camerelor.

Faceti click dreapta pe o zona pentru a deschide meniul cu optiuni suplimentare:



Connect all video (Main Stream): conecteaza toate camerele cu flux principal

Connect all video (Second Stream): conecteaza toate camerele cu flux secundar

Disconnect all video: deconecteaza toate camerele

Device config: deschide interfața de configurare dispozitiv.

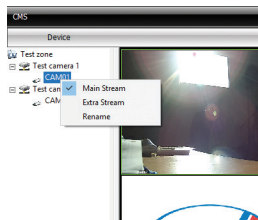
*Nota: Interfața de configurare poate fi accesata si prin meniul principal, **System - Remote config***

Refresh channel name: improspatare nume canal

Sync time with PC: sincronizare cu ora din PC

Rename: redenumeste canal

Faceti click dreapta pe o camera pentru a deschide meniul cu optiuni suplimentare:



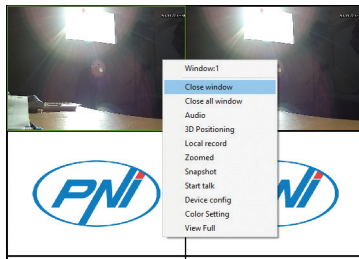
Main menu: flux principal

Extra stream: flux extra

Rename: redenumeste camera

ZONA PREVIZUALIZARE CAMERE:

Faceti click dreapta pe un canal pentru a deschide meniul cu optiuni suplimentare:



Close window: inchide canalul selectat

Close all windows: inchide toate canalele

Audio: activeaza audio pentru canalul selectat

Nota: Camera trebuie sa aiba functia de inregistrare audio printr-un microfon incorporat sau extern.

Local record: activeaza inregistrarea locala. Calea implicita pentru inregistrările locale este C:\Program Files (x86)\CMS\Record. Puteti schimba calea accesand meniul **System - Local config**.

Zoomed: zoom pe canalul selectat. Selectati cu mouse-ul zona pe care doriti sa faceti zoom.

Snapshot: faceti o captura a imaginii. Calea implicita pentru capturile de imagine este

C:\Program Files (x86)\CMS\Picture. Puteti schimba calea accesand meniul **System - Local config**.

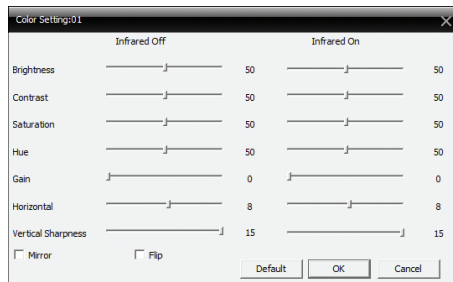
Start talk: activare intercom

Nota: Camera trebuie sa aiba difuzor incorporat sau extern

Device config: deschide interfata de configurare dispozitiv.

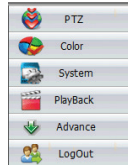
*Nota: Interfata de configurare poate fi accesata si prin meniul principal, **System - Remote config***

Color setting: deschide interfata cu setarile imaginii: luminozitate, contrast, saturatie etc.



Full view: activeaza vizualizarea pe ecranul intreg. Click dreapta pe **Main desktop** pentru a va intoarce la modul de vizualizare initial.

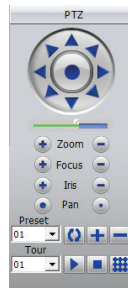
DESCRIERE MENU:



1. CONTROL PTZ:

Zoom, focus, rotatie

Nota: camera trebuie sa suporte functia PTZ



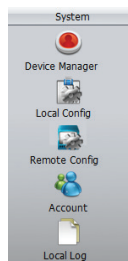
2. COLOR (CULOARE):

setari luminozitate, contrast, tonalitate, saturatie

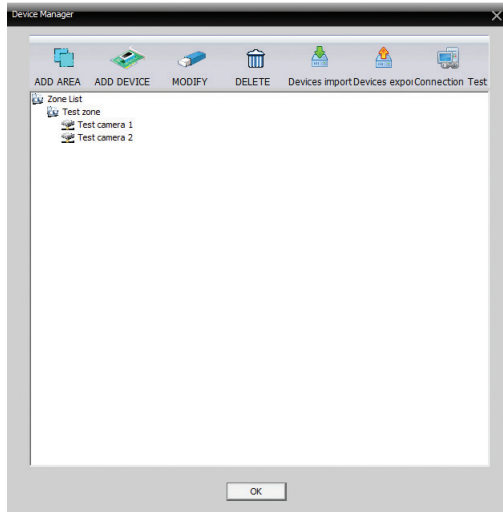


3. SYSTEM (SISTEM):

Device manager, Local config, Remote config, Account, Local log.



3.1 Device manager (Administrare dispozitive):

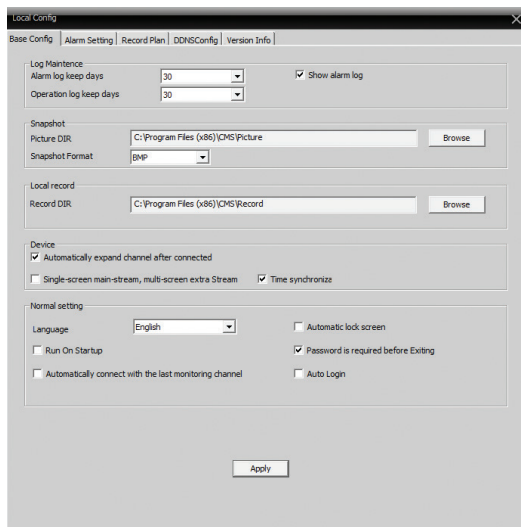


Procedura de adaugare a camerelor este descrisa la pagina 3.
Puteti de asemenea adauga, modifica sau sterge o camera.

*Nota: Inainte de a modifica o camera, aceasta trebuie deconectata. In interfata principala, faceti click dreapta pe numele zonei si selectati **Disconnect all video** (Deconecteaza toate camerele). Reporniti aplicatia CMS. Acum puteti modifica sau sterge o camera.*

3.2 Local config (Configurare locala):

Base config (Setari de baza): Log maintenance (setati perioada de pastrare a istoricului), **Snapshot** (selectati directorul unde vor fi salvate capturile de imagine), **Local record** (selectati directorul unde vor fi salvate inregistrările locale) etc.



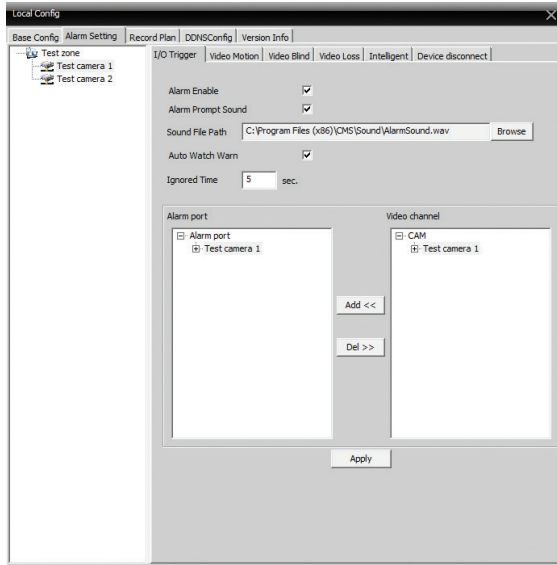
Alarm setting (Setari alarma):

Selectati tipul de alarma: la miscare, lipsa imagine sau deconectare dispozitiv.

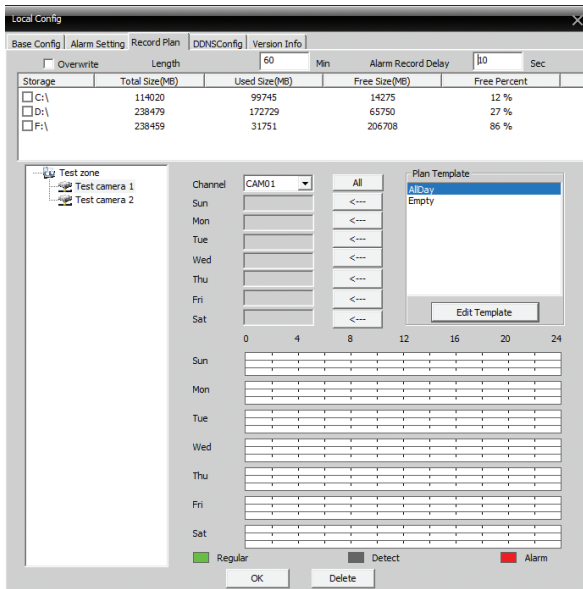
Alarm enable: activati alarma

Alarm prompt sound: activati sunetul in cazul unei alarme. De exemplu, in caz de miscare, aplicatia CMS va emite un sunet de alarma. Selectati sunetul in **Sound file path**.

Auto watch warn: daca este bifat, in caz de alarma, canalul pe care s-a inregistrat situatia de alarma va fi vizualizat in prim plan.

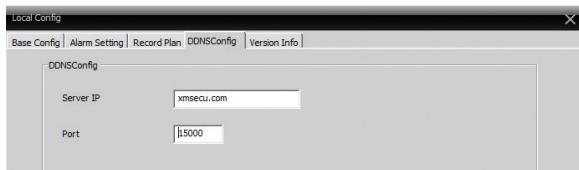


Record plan (Programare inregistrare):

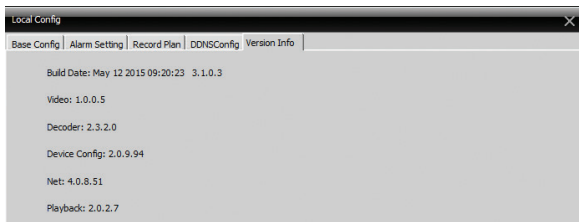


Programati perioada de inregistrare pentru fiecare canal.

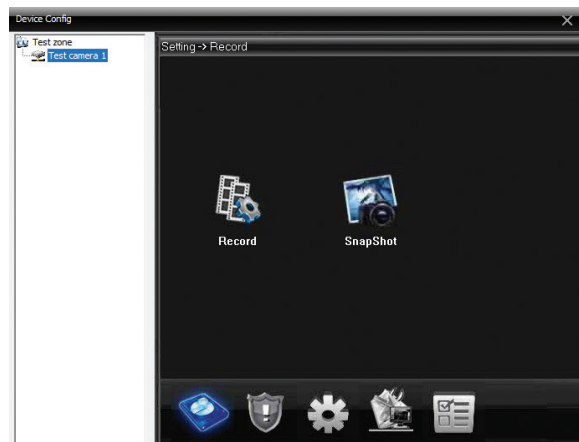
DDNS config (Configurare DDNS):



Version info (Informatii versiune):

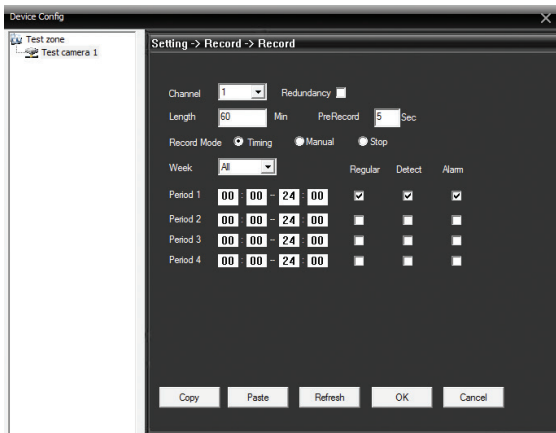


3.3 Remote config (Configurari la distanta):



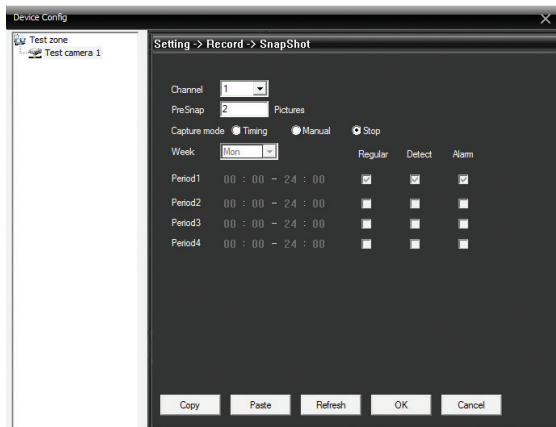
Record (Inregistrare):

Setati modul de inregistrare la distanta (pe card SD sau NVR, in functie de modelul camerei): programata sau manuala.

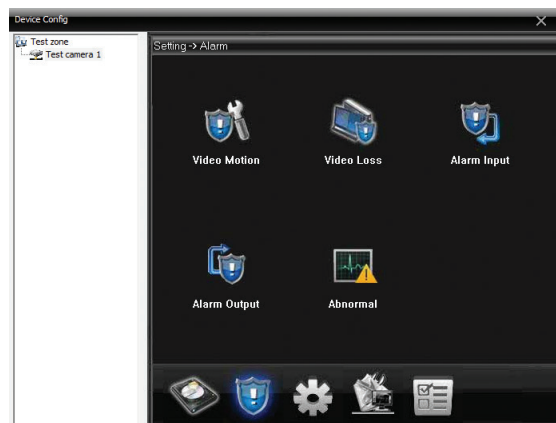


Snapshot (Captura imagine):

Setati modul (manual sau programat) in care camera realizeaza capturi de imagine.

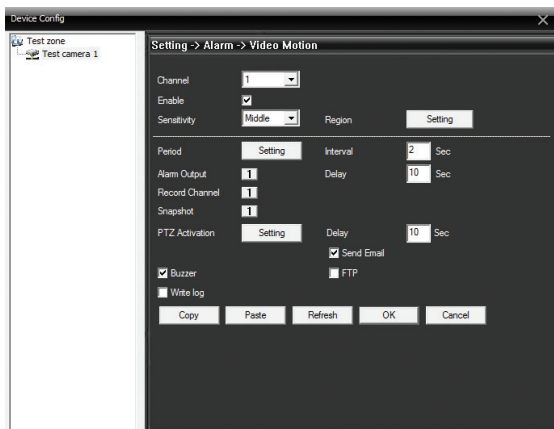


Alarm (Setari Alarma):

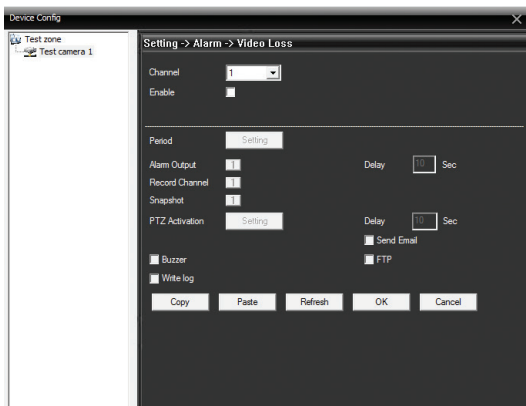


Video motion (Detectie miscare):

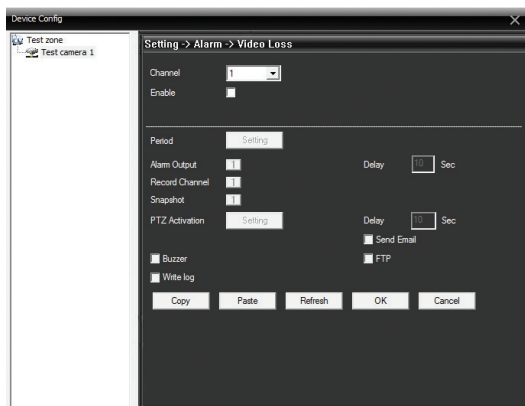
Activati inregistrarea la miscare, nivelul de sensibilitate, perioada etc.



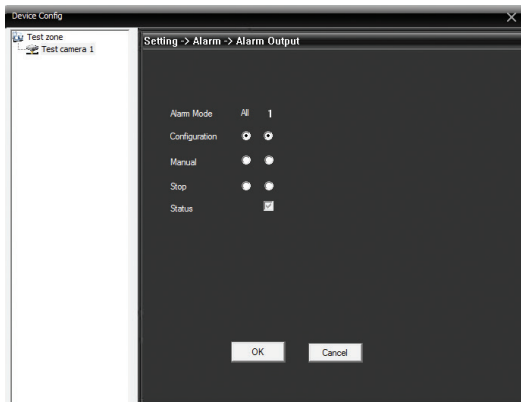
Video loss (Pierdere imagine):



Alarm input:

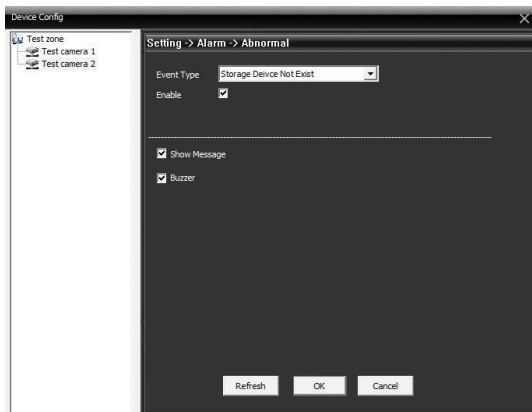


Alarm output:



Abnormal (Situatii anormale):

Activati alarma in caz de lipsa dispozitiv de stocare, lipsa spatiu pe dispozitivul de stocare, imposibilitate de accesare a dispozitivului de stocare, conflict IP sau lipsa interne.

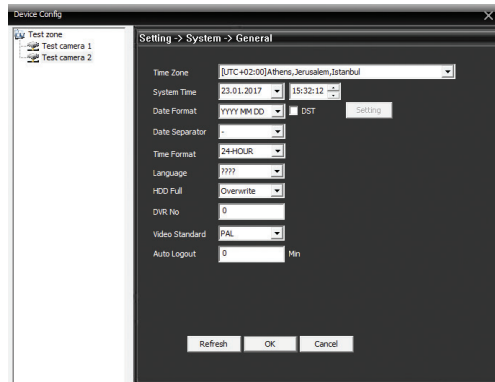


System (Sistem):



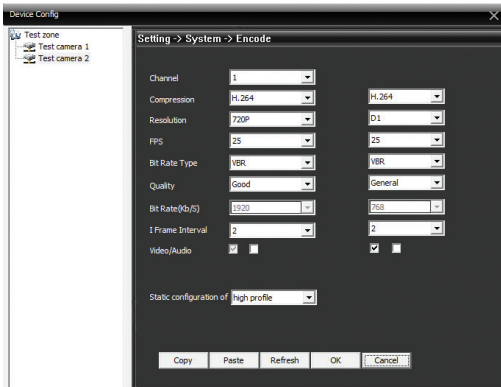
General:

Setati fusul orar, format ora si data, limba etc.



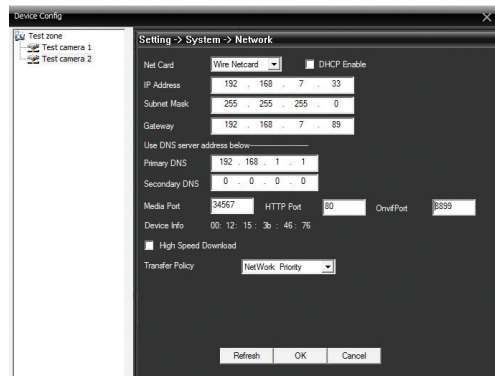
Encode (Codare):

Setati parametrii video cum ar fi: rezolutie, compresie, cadre pe secunda, calitate etc. pentru fluxul principal si secundar.

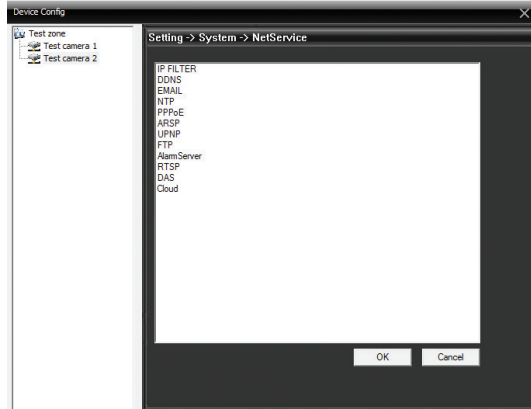


Network (Retea):

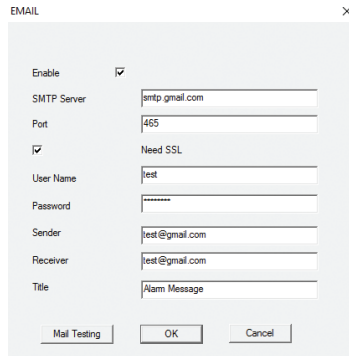
Setati parametrii de retea cum ar fi: IP, subnet mask, gateway, port etc. Bifati DHCP pentru preluarea acestora automat din retea.



NetService:

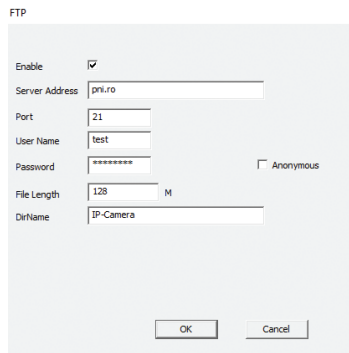


Email: setati email-ul unde doriti sa primiti avertizarile de alarma.



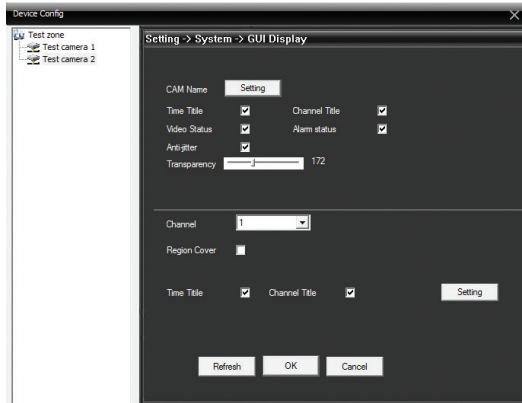
- Note:*
- Recomandam folosirea unui cont de gmail
 - Activati permisiunea aplicatiilor nesigure ("Allow less secure apps: ON") in sectiunea My Account
 - La Sender si Receiver trebuie sa fie trecut acelasi cont

FTP: setati serverul unde doriti sa se salveze avertizarile de alarma.



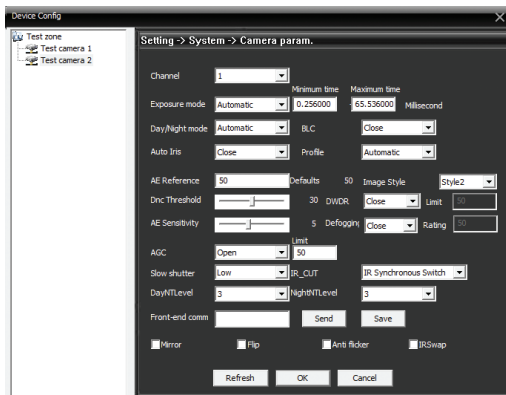
GUI Display (Graphical User Interface):

Setati onformatiile care doriti sa fie afisate in fereastra de previzualizare.

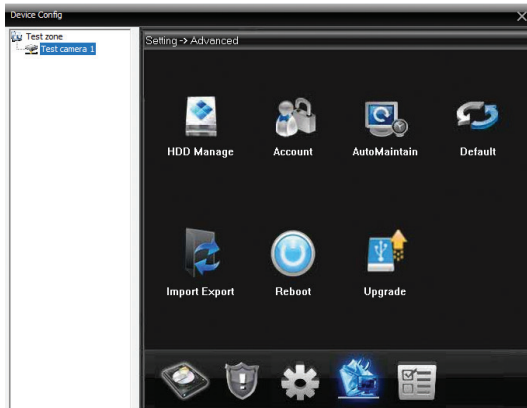


Camera param. (Configurare parametri camera):

Setati parametrii de imagine cum ar fi: expunere, sensibilitate, viteza obturator etc.

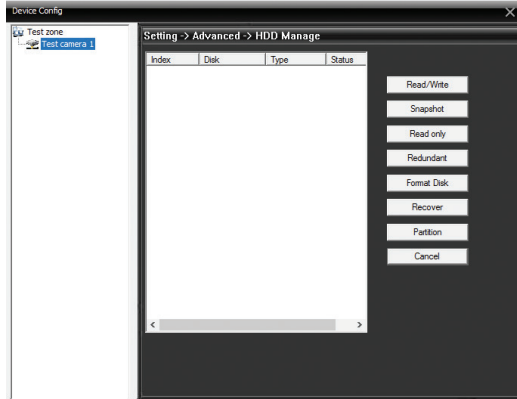


Advanced (Setari avansate):



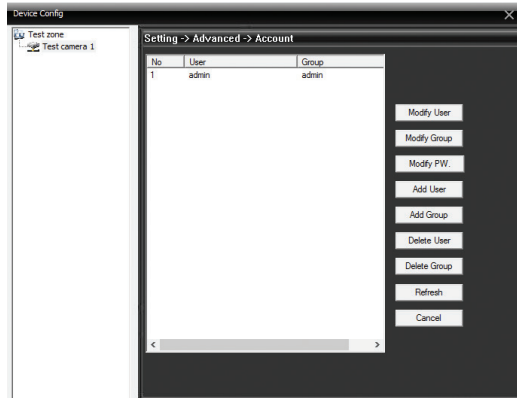
HDD Manage (Administrare hard disk):

Permite administrarea, formatarea, partitionarea sau setarea hard disk-urilor.



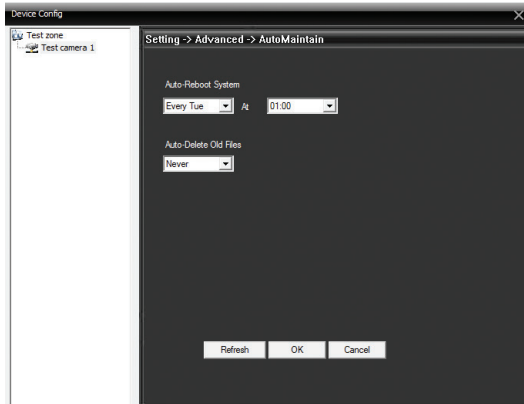
Account (Utilizatori):

Permite administrarea utilizatorilor si a grupurilor, modificarea parolelor dispozitivelor conectate.



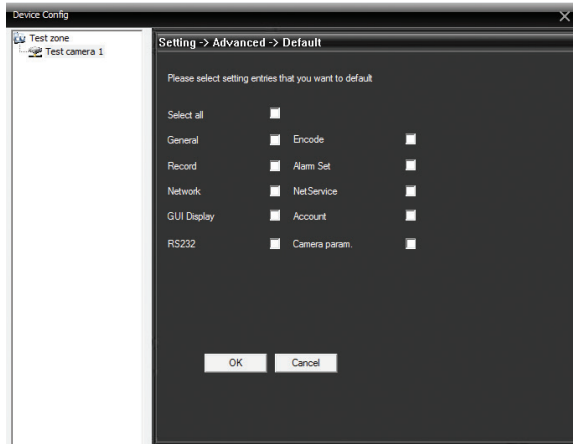
Auto maintain (Mentenanța):

Setati repornirea periodica automata a sistemului:



Default (Intoarcerea la setarile din fabrica):

Bifati setarile pe care doriti sa le resetati.



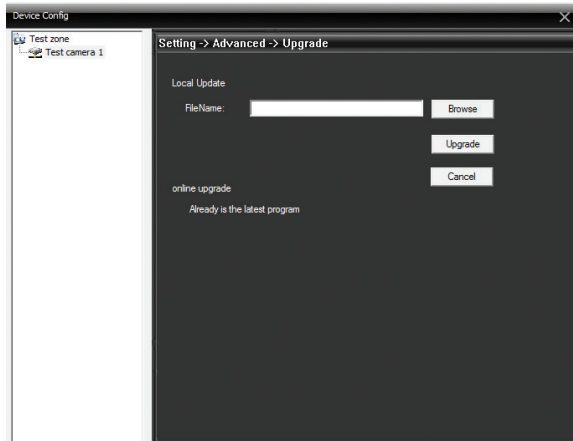
Import Export:

Importati sau exportati configurariile sistemului sau istoricul operatiunilor.

Reboot (Repornire):

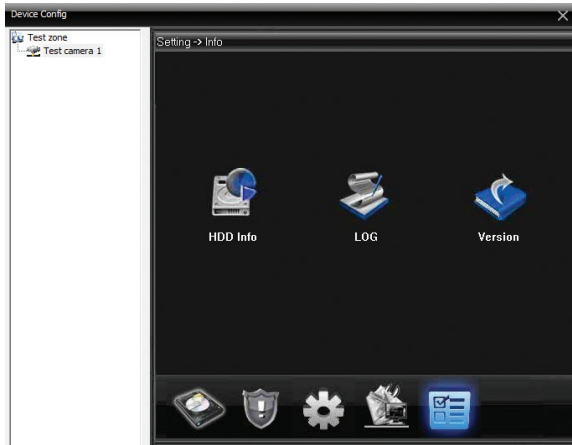
Repornire aplicatie.

Upgrade (actualizare firmware):



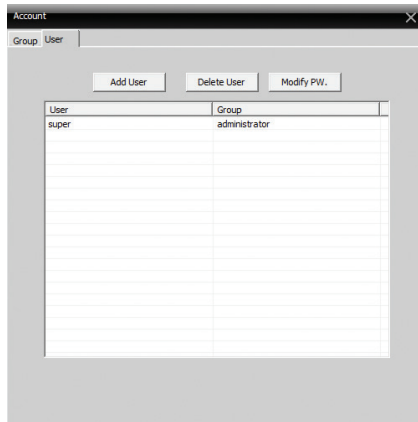
Info (Informatii sistem):

Obtineti informatii despre hard disk, istoric operatiuni si versiune:



3.4 Account (Utilizatori):

Permite administrarea utilizatorilor si a grupurilor.



3.5 Local log (istoric operatiuni locale):

Afiseaza istoricul operatiunilor in perioada selectata:

| No | Type | Date | Device | User | Describe |
|----|--------------|---------------------|---------------|-------|--------------------------------------|
| 1 | System Op... | 2017-01-23 09:27:55 | | super | User:super Login |
| 2 | Video | 2017-01-23 09:32:05 | Test camera | admin | Connect successful |
| 3 | Video | 2017-01-23 09:32:07 | Test camera | admin | Channel 1 Open OK |
| 4 | Video | 2017-01-23 09:40:46 | Test camera | admin | Channel 1 Closed successful |
| 5 | System Op... | 2017-01-23 09:40:46 | Test camera | admin | Disconnect Network is error |
| 6 | Video | 2017-01-23 09:41:01 | Test camera | admin | Connect failed Can't find the device |
| 7 | Video | 2017-01-23 09:49:50 | Test camera | admin | Connect successful |
| 8 | Video | 2017-01-23 09:56:07 | Test camera 2 | admin | Connect successful |
| 9 | Video | 2017-01-23 09:56:08 | Test camera 2 | admin | Channel 1 Open OK |
| 10 | Video | 2017-01-23 11:01:58 | Test camera | admin | Channel 1 Closed successful |
| 11 | Video | 2017-01-23 11:01:58 | Test camera | admin | Channel 1 Open OK |
| 12 | Video | 2017-01-23 11:02:04 | Test camera | admin | Channel 1 Closed successful |
| 13 | Video | 2017-01-23 11:02:04 | Test camera | admin | Channel 1 Open OK |
| 14 | Video | 2017-01-23 11:53:08 | Test camera | admin | Channel 1 Closed successful |
| 15 | Video | 2017-01-23 11:55:10 | Test camera | admin | Channel 1 Open OK |
| 16 | Device Co... | 2017-01-23 12:04:07 | Test camera 1 | admin | Record |
| 17 | Video | 2017-01-23 12:40:56 | Test camera | admin | Channel 1 Closed successful |
| 18 | System Op... | 2017-01-23 12:40:56 | Test camera | admin | Disconnect Network is error |
| 19 | Video | 2017-01-23 12:43:07 | Test camera | admin | Connect successful |
| 20 | Video | 2017-01-23 12:41:20 | Test camera 2 | admin | Channel 1 Closed successful |
| 21 | System Op... | 2017-01-23 12:41:22 | Test camera 2 | admin | Disconnect Network is error |
| 22 | Video | 2017-01-23 12:43:25 | Test camera 2 | admin | Connect successful |
| 23 | Video | 2017-01-23 13:54:19 | Test camera | admin | Channel 1 Closed successful |
| 24 | Video | 2017-01-23 13:54:43 | Test camera 2 | admin | Channel 1 Closed successful |
| 25 | System Op... | 2017-01-23 13:56:15 | Test camera | admin | Disconnect |
| 26 | Video | 2017-01-23 13:56:17 | Test camera 1 | admin | Connect successful |
| 27 | Video | 2017-01-23 13:56:17 | Test camera 1 | admin | Channel 1 Open OK |
| 28 | System Op... | 2017-01-23 13:56:17 | Test camera 2 | admin | Disconnect |
| 29 | Video | 2017-01-23 13:56:18 | Test camera 2 | admin | Connect successful |
| 30 | Video | 2017-01-23 13:56:19 | Test camera 2 | admin | Channel 1 Open OK |
| 31 | Video | 2017-01-23 13:57:08 | Test camera 2 | admin | Channel 1 Closed successful |
| 32 | Video | 2017-01-23 13:58:55 | Test camera 1 | admin | Channel 1 Closed successful |
| 33 | System Op... | 2017-01-23 13:59:10 | | super | Close CMS |

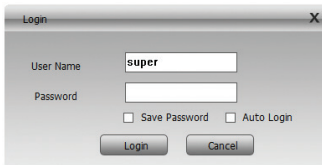
4. Playback (Redare inregistrari):

Selectati camera si perioada pentru a reda sau descarca inregistrarile locale (salvate in PC) sau la distanta (pe cardul SD sau pe hard disk, in functie de modelul camerei):

The screenshot shows the 'Record' application window with the 'Local Playback' tab selected. The interface includes the following elements:

- Device:** A dropdown menu currently showing 'Test camera'.
- Channel:** A dropdown menu.
- Query Mode:** Radio buttons for 'By Name' (selected) and 'By Time'.
- Multireplay:** A list box with 'Select All', 'Synchronous', 'Add', and 'Delete' buttons.
- Type:** A dropdown menu set to 'All videos'.
- Begin:** A date and time selector set to '26.01.2017' and '00:00:00'.
- End:** A date and time selector set to '26.01.2017' and '23:59:59'.
- Buttons:** 'Search', 'Play', and 'Download' buttons.
- Navigation:** 'PageUp' and 'PageDown' buttons.
- File List:** A table with columns 'NO' and 'File'.
- Playback Controls:** A set of standard media control buttons (play, pause, stop, next, previous, full screen) and a progress bar at the bottom.

5. Logout (Iesire din aplicatie):



A screenshot of a 'Login' dialog box. The dialog has a title bar with 'Login' on the left and a close button 'X' on the right. Inside the dialog, there are two text input fields. The first is labeled 'User Name' and contains the text 'super'. The second is labeled 'Password' and is empty. Below the password field are two checkboxes: 'Save Password' and 'Auto Login', both of which are unchecked. At the bottom of the dialog are two buttons: 'Login' and 'Cancel'.

*Nota: Puteti dezactiva cererea parolei in momentul iesirii din cont accesand **System - Local config - Base config**. Debifati optiunea "Password is required before exiting".*

Surveillance cameras monitoring software
General CMS (Windows)

User manual



INSTALLATION:

The software installation file can be found on the CD included in the package or on the product page on the manufacturer's website.

RECOMMENDATIONS:

The installation, configuration and commissioning of this device must be done in accordance with applicable law and by qualified personnel who can properly interpret the notions and technical terms and can implement the technical / IT procedures described in the manual.

BASIC OPERATIONS:

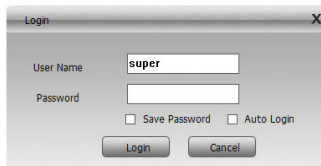
- Connect the surveillance device to a power source
- Connect the surveillance device to the Internet (on the router) using an Ethernet cable
- Connect your PC to the Internet

Note: Both the surveillance device and the PC must be in the same network (connected to the same router).

AUTHENTICATION:

Open CMS software.

In the authentication interface, fill in your username and password. By default, the "super" user is not password protected.



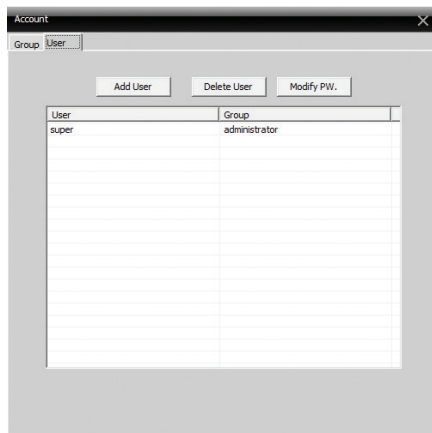
Login

User Name

Password

Save Password Auto Login

*Note: After first login, we recommend that you change the password. Accesati **System - Account - User**:*



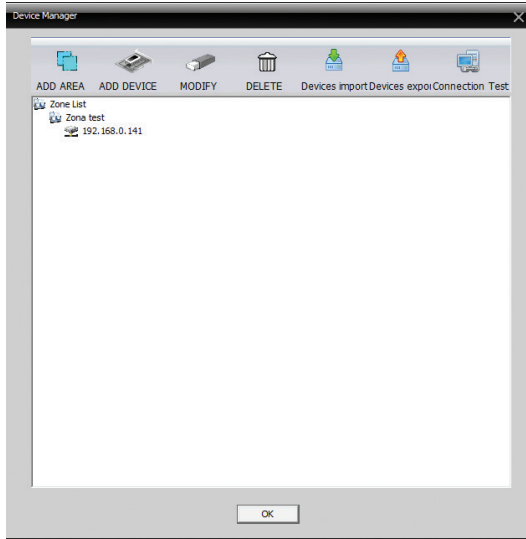
Account

Group:

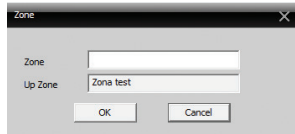
| User | Group |
|-------|---------------|
| super | administrator |
| | |
| | |
| | |
| | |
| | |
| | |
| | |
| | |
| | |

ADD CAMERA BY AUTOMATIC NETWORK SEARCH:

1. Access System - Device manager:

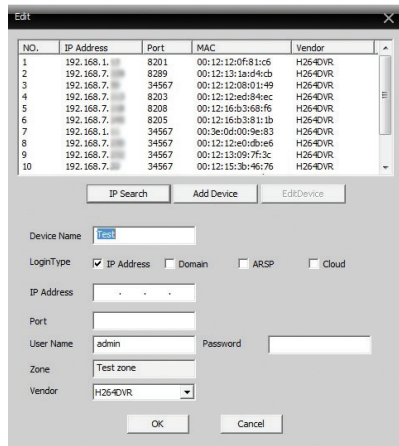


2. Click Add area:



Give a name to the added area.

3. Click the newly created area and then Add device. In the interface that opens, check IP Address then click IP Search to search for network cameras:

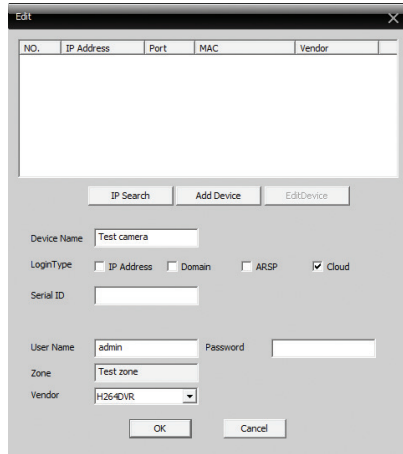


4. Select the room you are interested in and fill in your password, then click Add device. Now the camera can be seen in the preview interface.

Note: By default, the admin username is not protected by any password. Leave the Password field blank. To change your camera password, go to System - Remote config - Advanced - Account.

ADDING THE CAMERA THROUGH CLOUD SEARCH:

1. In the camera added interface, check Cloud:



2. Fill in the Serial ID and Password fields.

Note: The Serial ID can be found on the label attached to the camera or using the Device Manager application (the application installation file can be found on the CD included in the package), depending on the camera model.

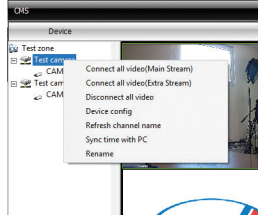
MAIN INTERFACE DESCRIPTION:



1. List of rooms
2. Channel preview area
3. Time / Date
4. PTZ (Pan, Til, Zoom)
5. Menu

DEVICE:

In this area you can see the organization of areas and rooms.
Right-click an area to open the menu with additional options:



Connect all video (Main Stream): Connects all mainstream cameras

Connect all video (Second Stream): Connects all cameras with secondary stream

Disconnect all video: Disconnect all cameras

Device config: opens the device configuration interface.

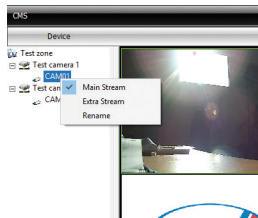
Note: The configuration interface can also be accessed through the main menu, System - Remote config

Refresh channel name: refresh channel name

Sync time with PC: sync with PC time

Rename: renames the channel

Right click on a camera to open the menu with additional options:



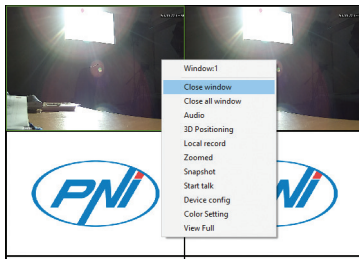
Main menu: main stream

Extra stream: extra stream

Rename: rename the camera

PREVIEW AREA:

Right click on a channel to open the menu with additional options:



- Close window: Close the selected channel
- Close all windows: Close all channels
- Audio: Enables audio for the selected channel

Note: The camera must have audio recording function via a built-in or external microphone.

Local record: Activates local recording. The default path for local records is C:\Program Files (x86)\CMS\Record. You can change the path by going to the System - Local config menu.

Zoomed: zoom on the selected channel. Select the area you want to zoom with the mouse.

Snapshot: Take a picture capture. The default capture path is

C:\Program Files (x86)\CMS\Picture. You can change the path by going to the System - Local config menu.

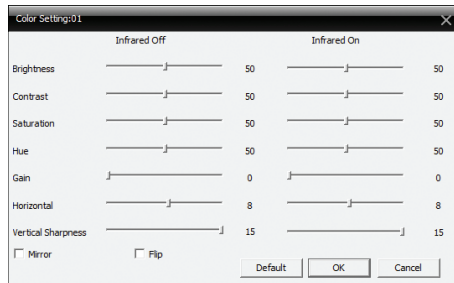
Start talk: activate intercom

Note: The camera must have a built-in or external speaker

Device config: opens the device configuration interface.

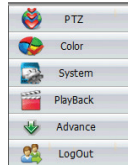
*Note: The configuration interface can also be accessed through the main menu, **System - Remote config***

Color setting: opens the image settings interface: brightness, contrast, saturation, etc.



Full view: Enables viewing on the entire screen. Right click on the main desktop to return to the original view.

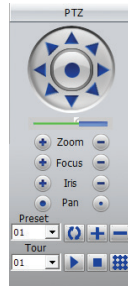
MENU:



1. PTZ:

Zoom, focus, rotate

Note: the camera must support the PTZ function



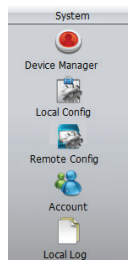
2. COLOR:

Brightness, contrast, tone, saturation settings

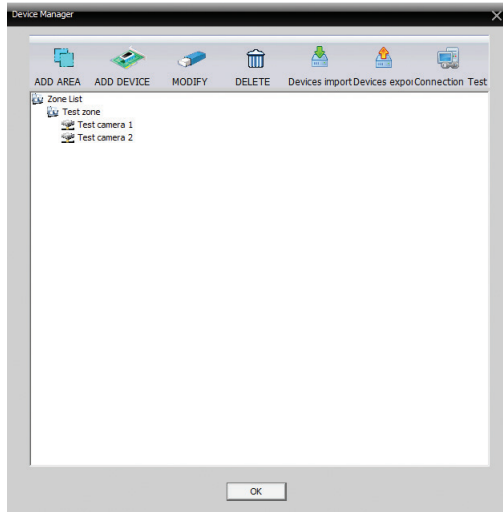


3. SYSTEM:

Device manager, Local config, Remote config, Account, Local log.



3.1 Device manager:

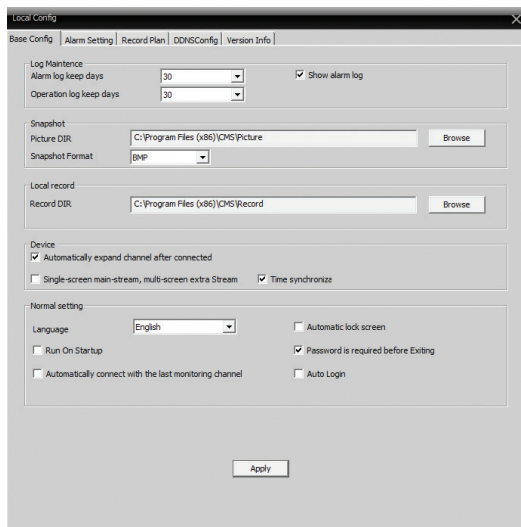


The procedure for adding the cameras is described on page 3. You can also add, modify or delete a camera.

Note: Before changing a camera, it must be disconnected. In the main interface, right-click on the name of the zone and select Disconnect all video. Restart the CMS application. You can now edit or delete a camera.

3.2 Local config:

Base config: Log maintenance (set the history storing time), **Snapshot** (select the folder where the capture will be saved), **Local record** (select the directory where your local records will be saved) etc.



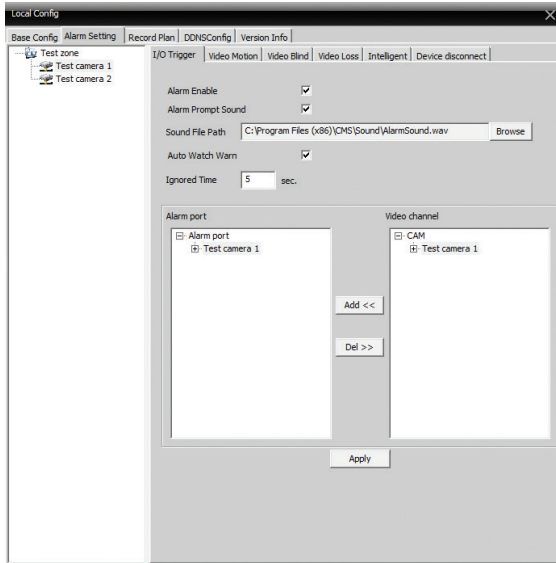
Alarm setting:

Select alarm type: motion, no picture, or device disconnect.

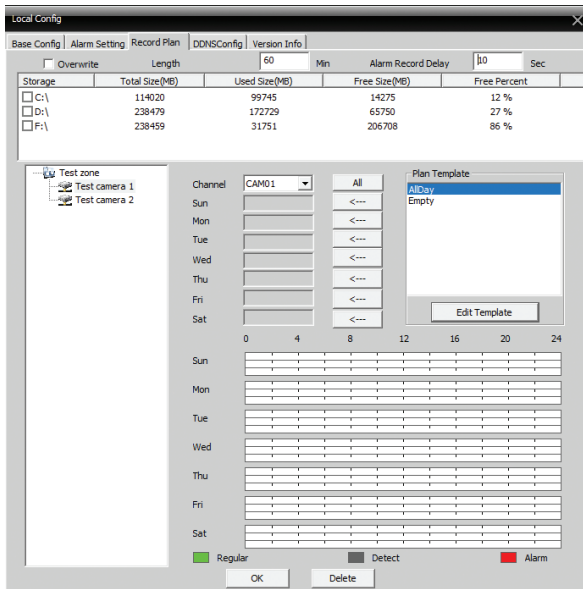
Alarm enable: turn on the alarm

Alarm prompt sound: activate the sound in the event of an alarm. For example, in case of movement, the CMS application will sound an alarm sound. Select sound in Sound file path.

Auto watch warn: if checked, in the case of an alarm, the channel on which the alarm situation was recorded will be seen in the foreground.

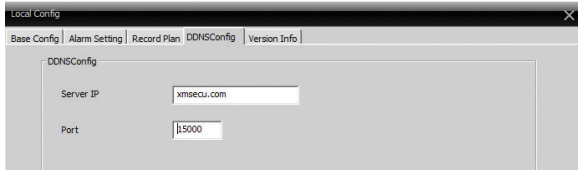


Record plan:

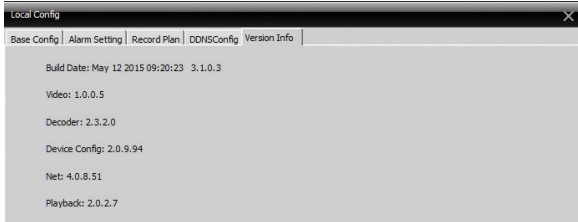


Schedule the recording time for each channel.

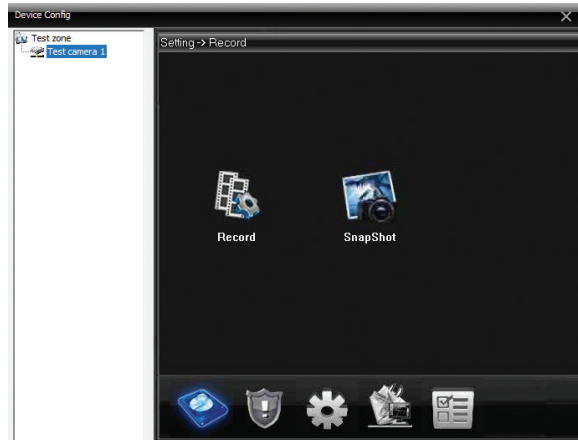
DDNS config:



Version info:

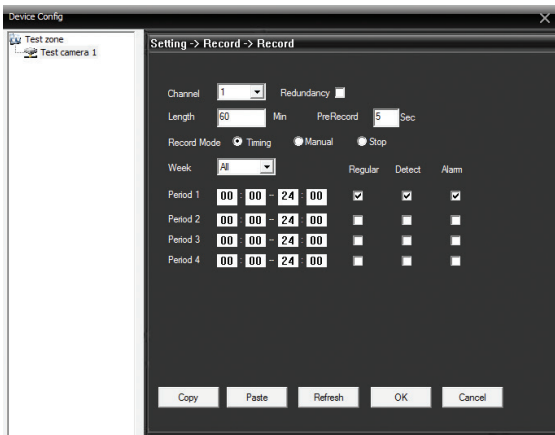


3.3 Remote config:



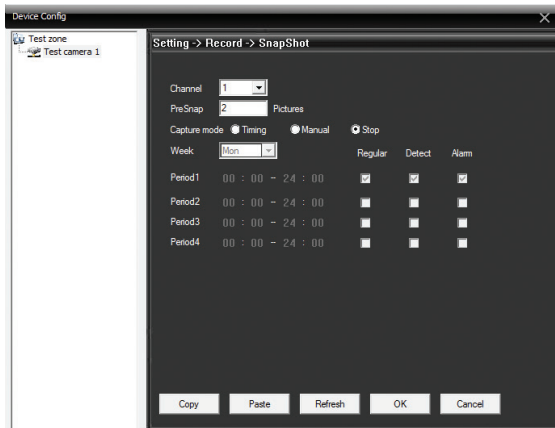
Record:

Set the remote recording mode (SD or NVR depending on the camera model); programmed or manual.

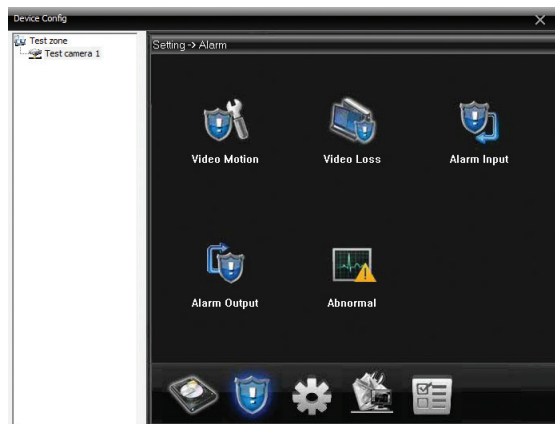


Snapshot:

Set the mode (manually or programmed) in which the camera captures images.

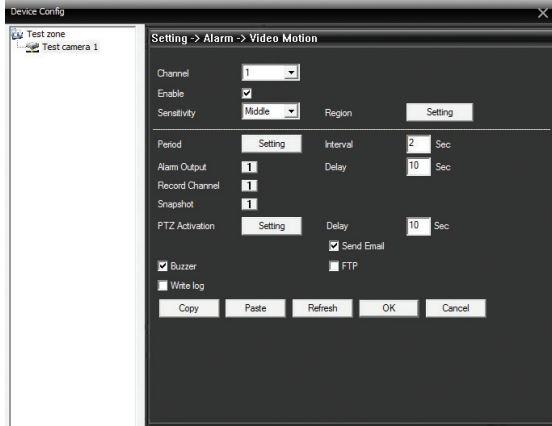


Alarm:

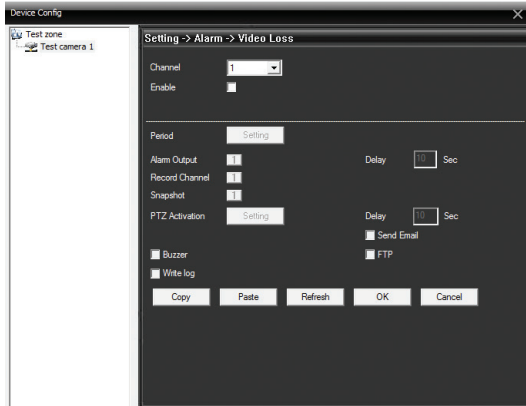


Video motion:

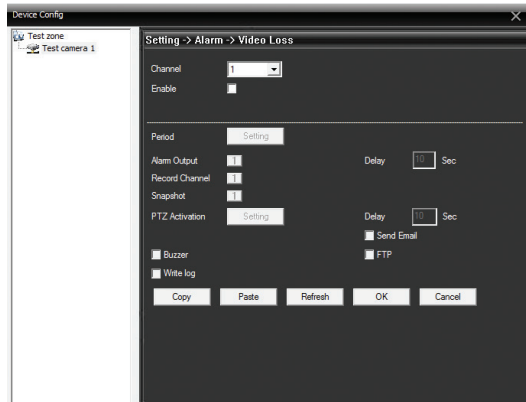
Enable motion recording, sensitivity level, period, etc.



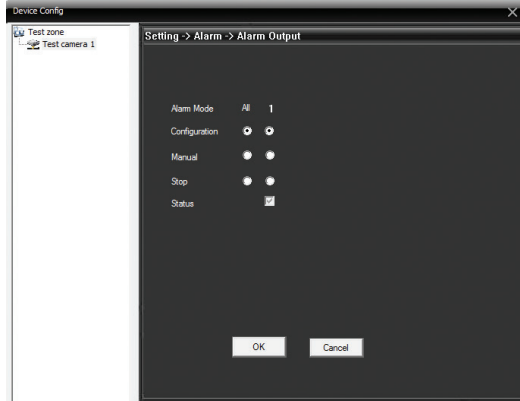
Video loss:



Alarm input:

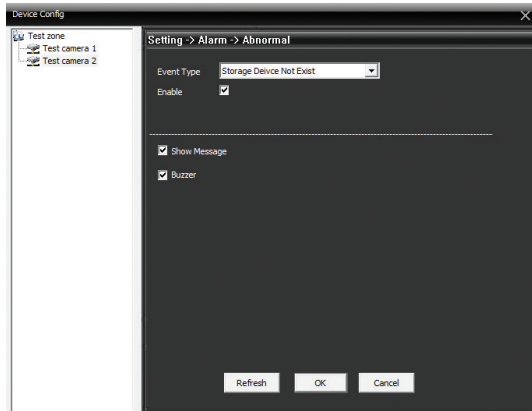


Alarm output:

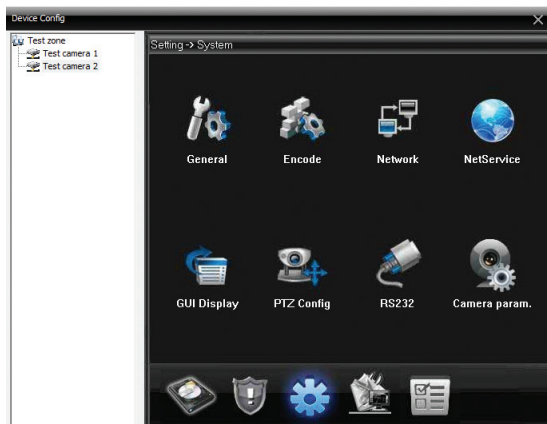


Abnormal:

Enable alarm in case of lack of storage device, lack of space on the storage device, impossibility to access the storage device, IP conflict or lack of internal.

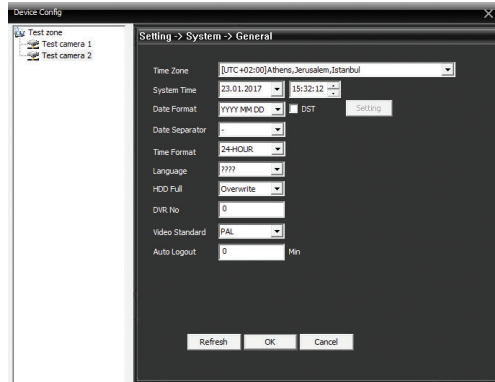


System:



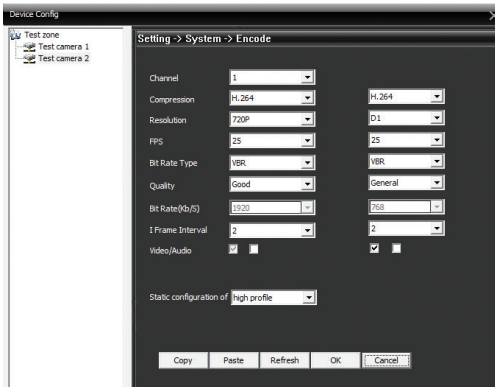
General:

Set the time zone, time and date format, language, etc..



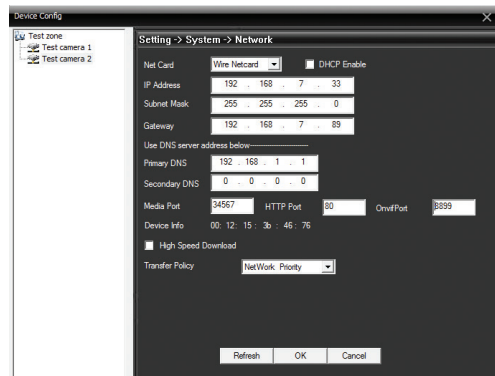
Encode:

Set video parameters such as: resolution, compression, frames per second, quality, etc. for primary and secondary flow.

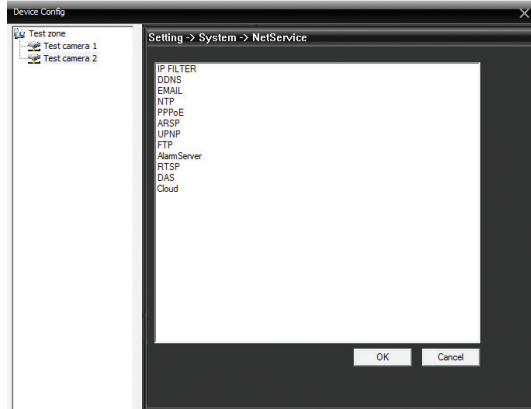


Network:

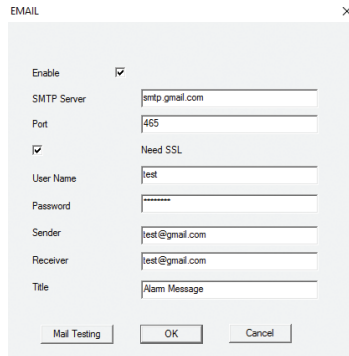
Set network parameters such as: IP, subnet mask, gateway, port etc. Check DHCP to automatically retrieve them from the network.



NetService:



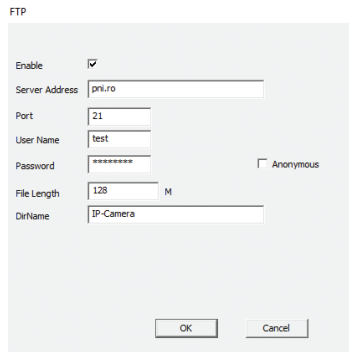
Email: set the email where you want to receive the alarm warnings.



Notes:

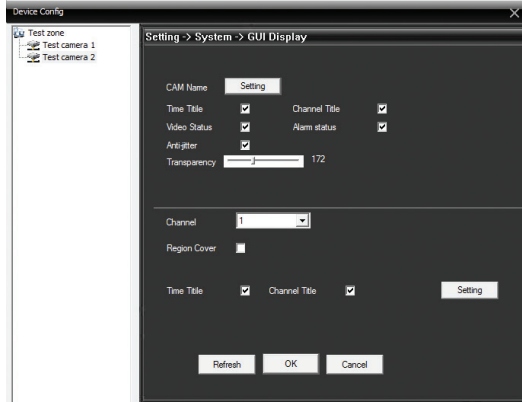
- We recommend using a gmail account
- Enable "Allow less secure apps: ON" in the My Account section
- The Sender and Receiver must be the same account

FTP: Set the server where you want to save the alarm warnings.



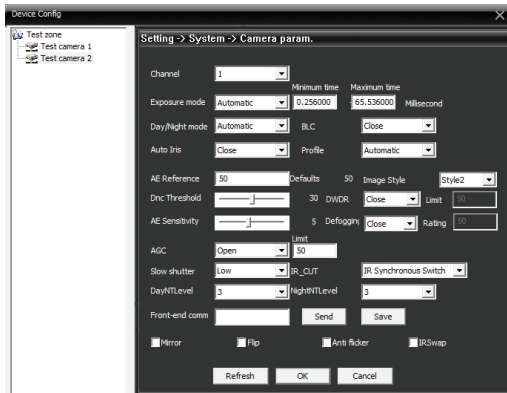
GUI Display (Graphical User Interface):

Set the information you want to display in the preview window.

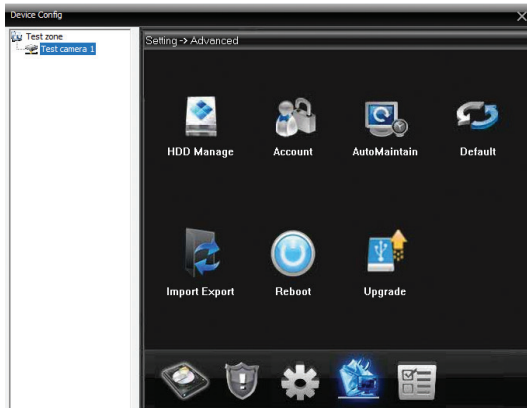


Camera param:

Set image parameters such as exposure, sensitivity, shutter speed, etc.

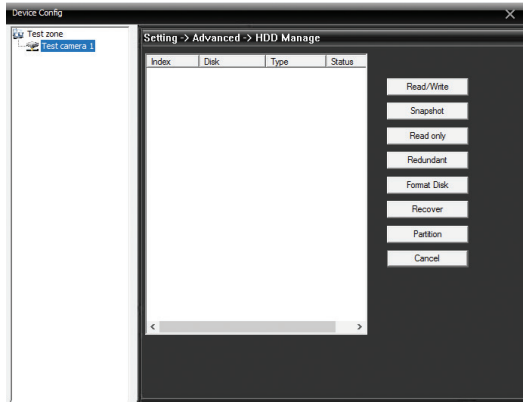


Advanced:



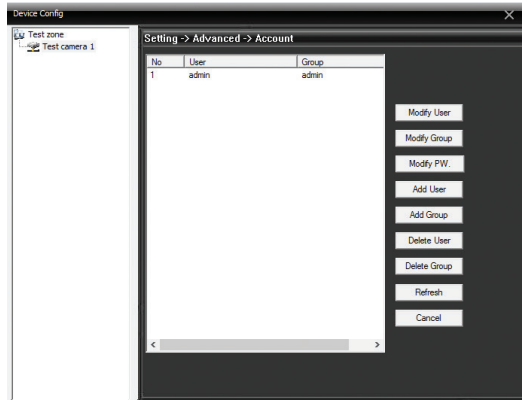
HDD Manage:

Allows hard disk management, formatting, partitioning, or setting.



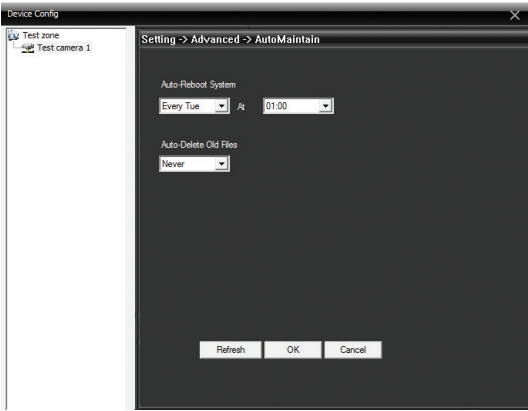
Account:

Allows users and groups to be managed, changing passwords for connected devices.



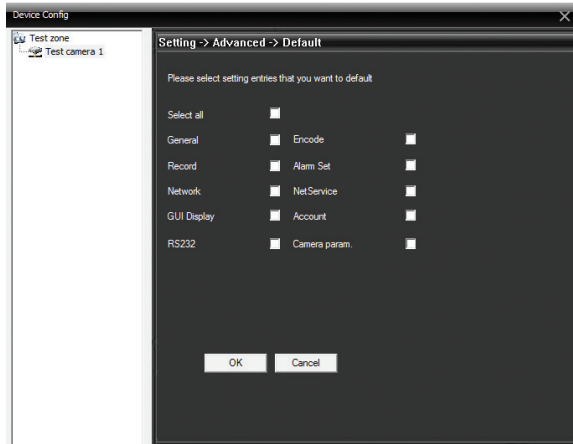
Auto maintain:

Set the automatic periodic restart of the system:



Default:

Tick the settings you want to reset.



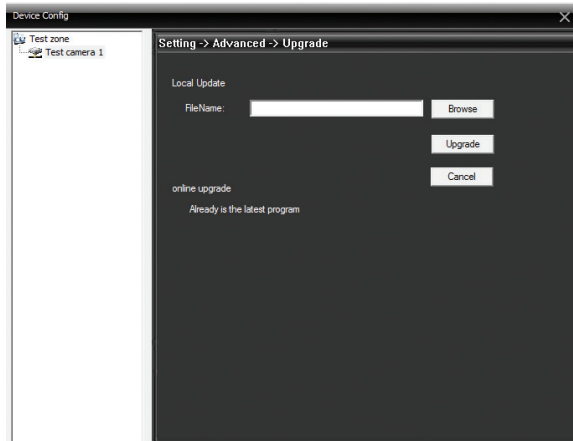
Import Export:

Import or export system configurations or operating history.

Reboot:

Reboot the application.

Upgrade:



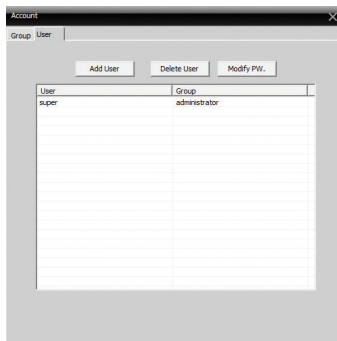
Info:

Get hard disk, transaction history, and version information:



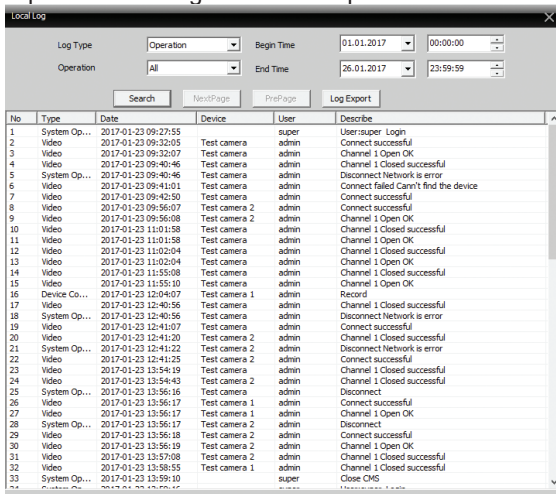
3.4 Account:

Allows users and groups to manage.



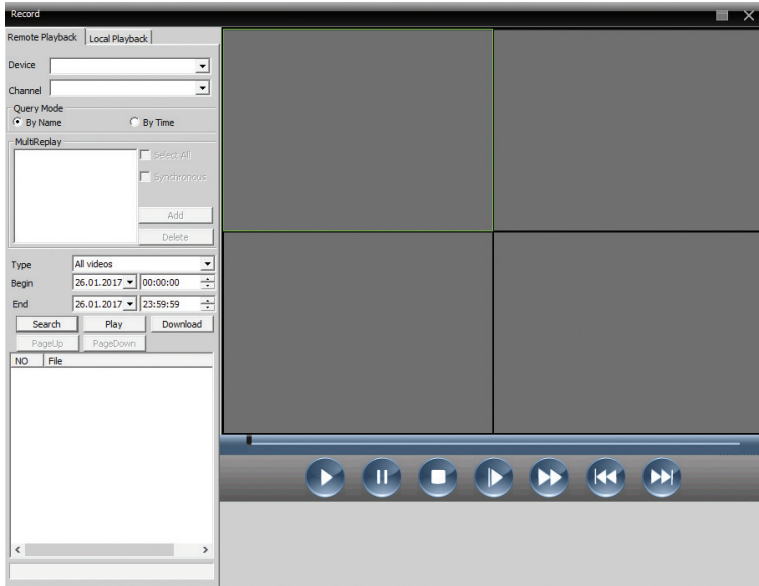
3.5 Local log:

Displays the history of operations during the selected period:

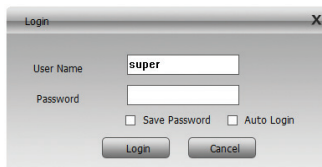


4. Playback:

Select the camera and the time to play or download the local (PC or remote) recordings (on the SD card or on the hard drive, depending on the camera model):



5. Logout:



Note: You can disable the password request when you exit the account by going to System - Local config - Base config. Uncheck "Password is required before exiting".

Térfigyelő kamera felügyeleti szoftver
General CMS (Windows)

Használati útmutató



TELEPÍTÉS:

A szoftvert amit fel akar telepíteni a csomagban levő CD-én található meg együtt a termékkel vagy a termék internet oldalán.

JAVASLATOK:

A készülék beszerelését, konfigurálását és üzembe helyezését az alkalmazandó jognak megfelelően kell végezni, valamint szakképzett személyzetnek, aki megfelelően értelmezheti a fogalmakat és a műszaki feltételeket, és végrehajthatja a kézikönyvben leírt technikai / informatikai eljárásokat.

ALAP MŰVELETEK :

- Csatlakoztassa a térfigyelő készüléket egy áramforráshoz
- Csatlakoztassa a térfigyelő készüléket Internethez (router-hez) használva Ethernet kábelt.
- Csatlakoztassa a PC Internethez.

Megjegyzés : Úgy a térfigyelő készlet mint a PC ugyanabban a hálózatban kell legyen (csatlakoztatva ugyanahoz a routerhez).

BEJELENTEKÉZÉS:

Nyissa meg a CMS szoftvert.

A megjelenített felületen töltse ki a felhasználónevet és jelszót. Alapértelmezett , felhasználónév "super" (administrator) ez nincs megvédve a jelszótól.

Login dialog box showing User Name: super, Password field, Save Password checkbox, Auto Login checkbox, and Login/Cancel buttons.

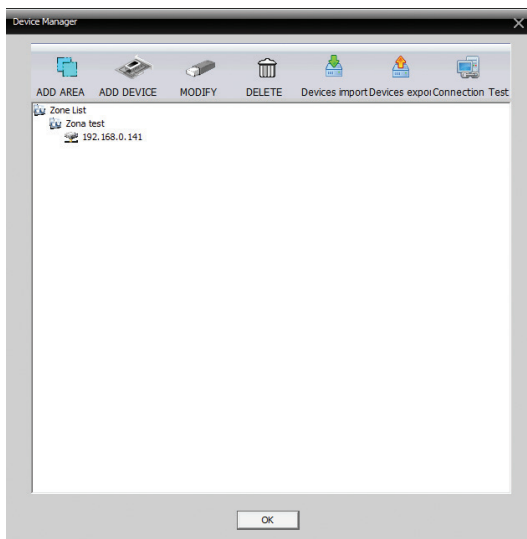
*Megjegyzés: Első bejelentkezés után kérjük változtassa meg a jelszót. Lépjen be a **System (Rendszer) - Account (Fiók) - User (Felhasználó)**:*

Account management window showing a table with columns for User and Group. The table contains one entry: super (administrator). Buttons for Add User, Delete User, and Modify PW. are visible.

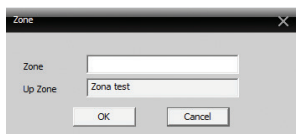
| User | Group |
|-------|---------------|
| super | administrator |

KAMERA HOZZÁADÁSA AUTOMATIZÁLT HÁLÓZATI KERESÉSSSEL:

1. Lépjen be **System (Rendszer) - Device manager (Készülék adminisztrálása)**:

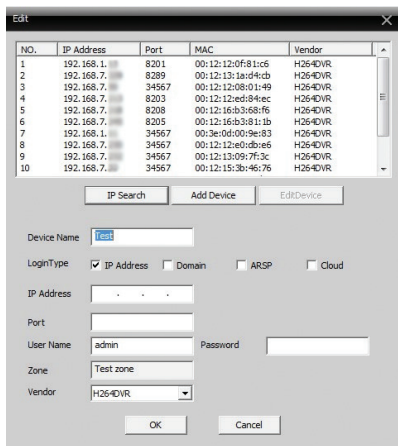


2. Kattintson **Add area (Terület hozzáadása)**:



Adjon nevet a hozzáadott területhez.

3. Kattintson a létrehozott területre és majd **Add device (Készülék hozzáadása)**. A felület ami megjelen, jelölje ki **IP Address** majd kattintson **IP Search** ahhoz, hogy megkeresse a kamerákat a hálózatban:



4. Válassza ki a kamerát, amelyiket Ön szeretné és töltsé ki a jelszót, majd kattintson **Add device**. Most már a kamera látható az előnézeti felületen.

*Megjegyzés : Alapértelmezett módban , a felhasználónév **admin** nincsen megvédve egyetlen jelszótól sem. Hadja kitöltetlenül a **Password mezőt**. Hogyha meg szeretné változtatni a kamera jelszavát lépjen be **System - Remote config - Advanced - Account**.*

KAMERA HOZZÁADÁSA CLOUD KERESÉSEN KERESZTÜL :

1. A kamera látható az előnézeti felületen, jelölje ki a **Cloud**:

| NO. | IP Address | Port | MAC | Vendor |
|-----|------------|------|-----|--------|
|-----|------------|------|-----|--------|

IP Search Add Device Edit Device

Device Name: Test camera

LoginType: IP Address Domain ARSP Cloud

Serial ID:

User Name: admin Password:

Zone: Test zone

Vendor: H264DVR

OK Cancel

2. Töltse ki a **Serial ID** és **Password**.

Megjegyzés: ID szám megtalálható a kamerához csatlakoztatott címkén vagy használva a Device Manager alkalmazást (az alkalmazás telepítési fájlja megtalálható a csomagban levő CD-n), a kamera módeltjétől függően.

FŐFELÜLET LEÍRÁSA :

| Type | Date | Device | Chan. | User | Result |
|--------------|---------------------|---------------|-------|-------|----------------------------------|
| Video | 2017-11-23 09:46:57 | Test camera 2 | 1 | admin | Connect successful |
| Video | 2017-11-23 09:46:58 | Test camera 1 | 1 | admin | Connect successful |
| Video | 2017-11-23 09:46:58 | Test camera 1 | 2 | admin | Connect successful |
| System Oper. | 2017-11-23 09:46:58 | Test camera 1 | 1 | admin | Connect New Cam? Find the device |
| Video | 2017-11-23 09:46:58 | Test camera 1 | 1 | admin | Connect New Cam? Find the device |
| Video | 2017-11-23 09:46:58 | Test camera 1 | 1 | admin | Connect successful |

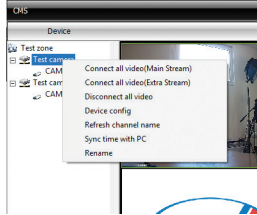
1. Kamerák listái

2. Csatornák előnézeti felülete

3. Óra / Dátum
4. PTZ (Pan, Tilt, Zoom)
5. Menü

KAMERA TERÜLETI LISTA (DEVICE):

Ezen a területen láthatja a területek és a kamerák megszervezését.
Kattintson jobbra egy felületre, hogy kinyissa a további opciókat :



Connect all video (Main Stream): csatlakoztatja az összes kamerát a főáramhoz.

Connect all video (Second Stream): csatlakoztatja az összes kamerát a másodlagos áramhoz

Disconnect all video: leválasztja az összes kamerát

Device config: kinyitja a készülék beállítási felületét

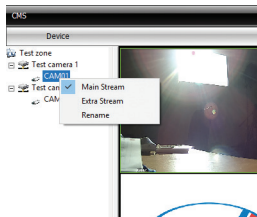
*Megjegyzés : Beállítási felülethez hozzá lehet férni belépve a főmenübe , **System - Remote config***

Refresh channel name: csatorna nevének frissítése

Sync time with PC: szinkronizálás PC idővel

Rename: újra nevezi a csatorna nevét

Kattintson jobbra egy felületre, hogy kinyissa a további opciókat :



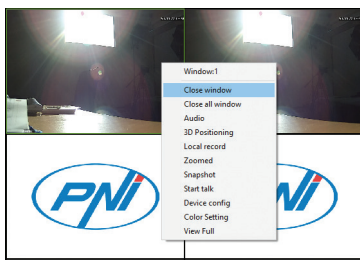
Main menu: főmenü

Extra stream: extra adatfolyam

Rename: újra nevezi a kamerát

KAMERÁK ELŐNÉZETI FELÜLETE :

Kattintson jobbra egy csatornára, hogy kinyissa a további opciókat:



Close window: zárja be a kiválasztott csatornát

Close all windows: bezárja az összes csatornát

Audio: aktiválja a kiválasztott csatorna hangját

Megjegyzés : A kamerának audió vételezési funkciója kell legyen egy beépített mikrofon vagy külső mikrofon.

Local record: aktiválja a helyi vételezést. Hozzáférés a helyi vételezéshez C:\Program Files (x86)\CMS\Record. Meg tudja változtatni ennek a helyét belépve **System - Local config menübe**.

Zoomed: nagyítás a kiválasztott csatornára. Válassza ki az egér segítségével azt a felületet amelyet fel szeretne nagyítani.

Snapshot: végezzen el egy képrögzítést . Az alapértelmezett hozzáférési hely a képrögzítéshez C:\Program Files (x86)\CMS\Picture. Meg tudja változtatni ennek a helyét belépve **System - Local config menübe**.

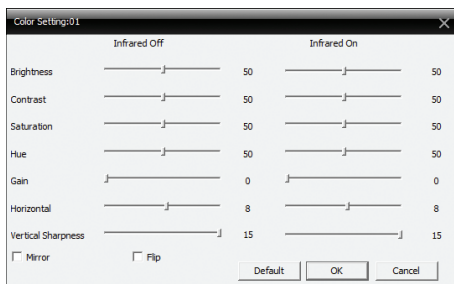
Start talk: intercom aktiválás

Megjegyzés :Kamera kell rendelkezzen egy beépített hangszorót vagy egy külső hangszorót

Device config: megnyitja a készülék beállítási felületét

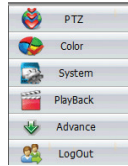
*Megjegyzés : A beállítási felülethez hozzá lehet férni a főmenün keresztül **System - Remote config***

Color setting: kinyitja a képek beállítási felületeit :fényerő, kontraszt, telítettség stb.



Full view: aktiválja a képernyő teljes megtekintését . Kattintson jobbra a **Main desktop**, hogy visszatérjen az előző nézeti módba.

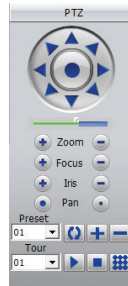
MENÜ LEÍRÁSA :



1. PTZ ELLENŐRZÉS:

Zoom, fókusz, fordulat

Megjegyzés : kamera kell támogassa a PTZ funkciót



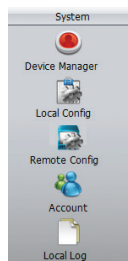
2. COLOR (SZÍN):

fényerő, kontraszt, hang, telítettség beállítások

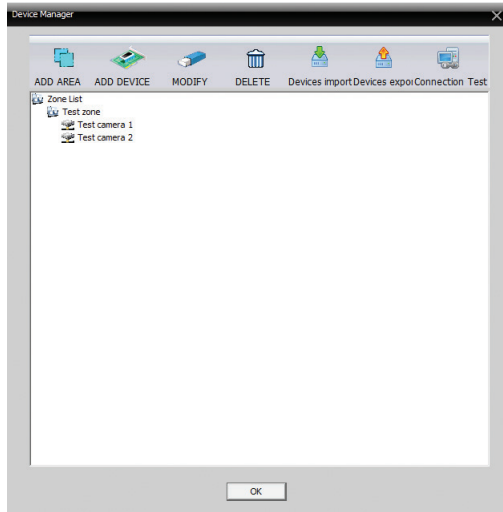


3. SYSTEM (RENDSZER):

Device manager, Local config, Remote config, Account, Local log.



3.1 Device manager (Készülék adminisztrálása):



A kamerák hozzáadási eljárásai a 3 oldalon van leírva.
Hozzá tudnak adni, megváltoztatni vagy kitörölni egy kamerát.

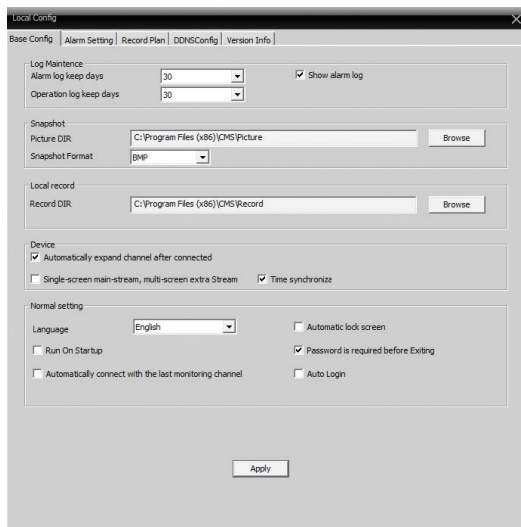
*Megjegyzés: Mielőtt megváltoztatja a kamerát, ezt le kell választani. Főfelületen, kattintson jobbra a terület nevére és válassza ki **Disconnect all video** (Kikapcsolja az összes kamerát). Indítsa újból a CMS alkalmazást. Most meg tudja változtatni vagy kitörölni egy kamerát*

3.2 Local config (Helyi beállítás):

Base config (Alapbeállítások): Log maintenance (állítsák be a régi események periódikus megtartását)

Snapshot (válassza ki azt a mappát ahová le lesznek mentve a képrögzítések)

Local record (álassza ki azt a mappát ahová lementi a vételezéseket) stb.



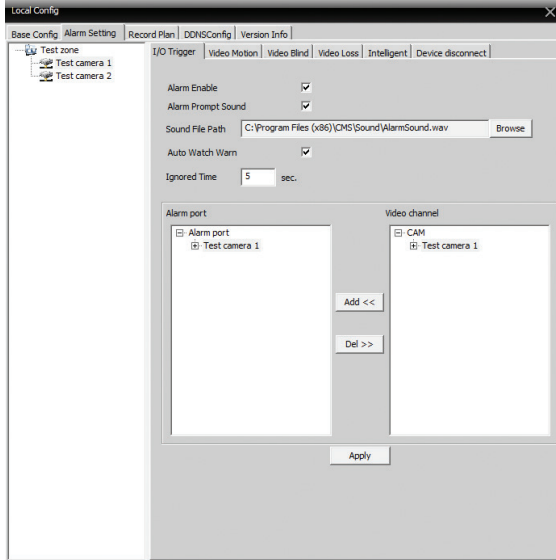
Alarm setting (Riasztóbeállítások):

Válassza ki a riasztás típusát : mozgásérzékeléskor, képhiányosság vagy húzza ki az eszközt.

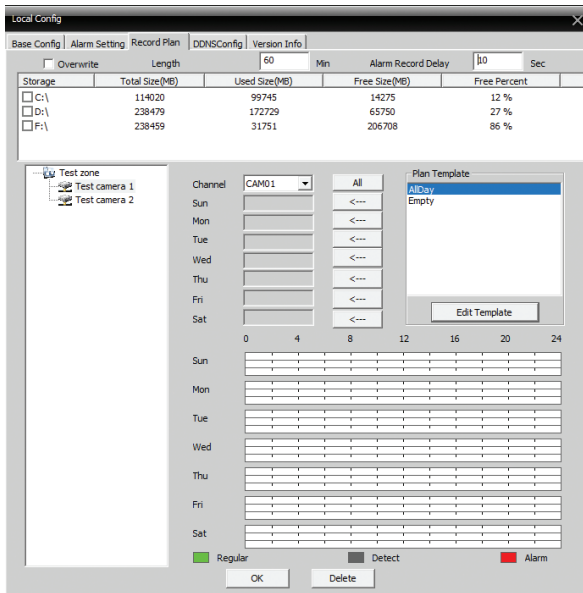
Alarm enable: aktiválja a riasztót

Alarm prompt sound: aktiválja a hangot riasztás esetén. Például mozgásérzékeléskor CMS alkalmazás egy riasztói hangot fog leadni. Válassza ki a hangot a **Sound file path**.

Auto watch warn: ha ez meg van jelölve , riasztás esetén , a csatorna ahol regisztrálva volt a főfelületben fog megjelenni.

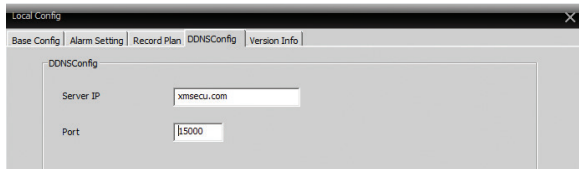


Record plan (Vételezési programálás):

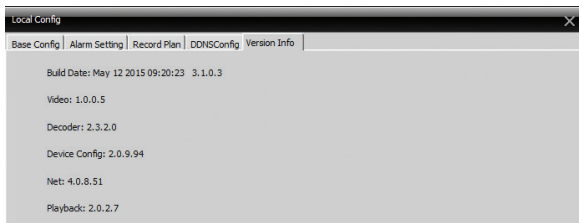


Programálja be a vételezési időt mindegyik csatornához.

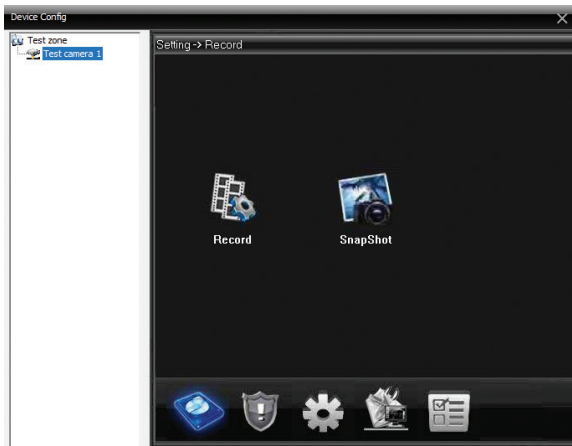
DDNS config (DDNS beállítás):



Version info (Információk a verzióról):

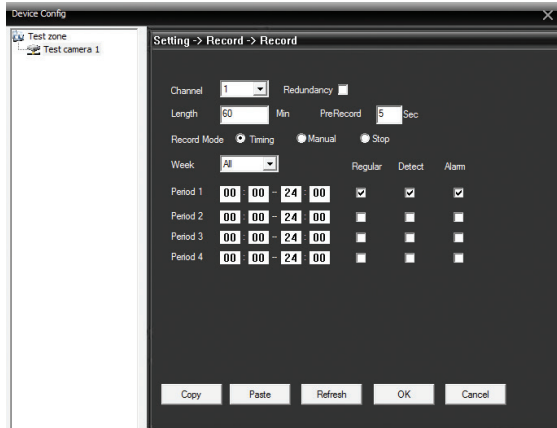


3.3 Remote config (Távolról való beállítás):



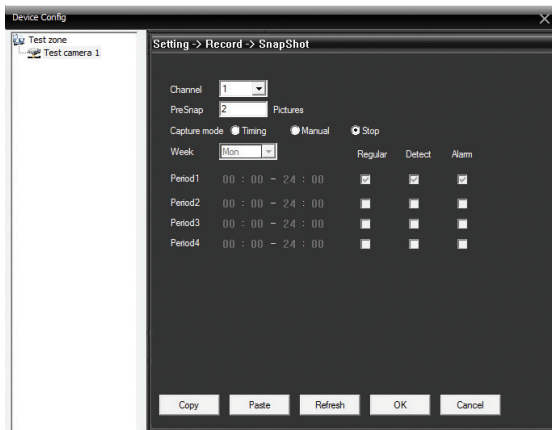
Record (Vételezés):

Állítsák be a vételezési módot távolról (SD kártyáról vagy NVR, kamera módjától függően): programozott vagy manuális

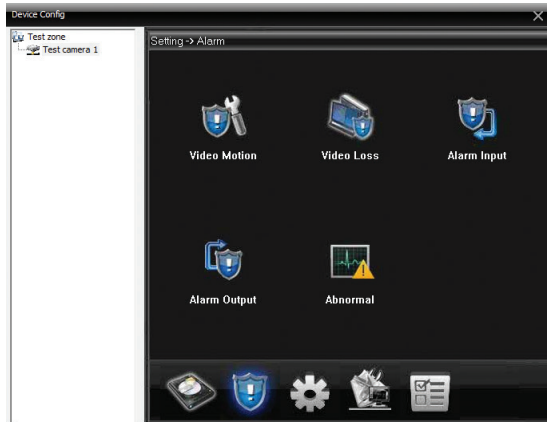


Snapshot (Képrögzítés):

Állítsák be azt a lehetőséget (manuális vagy programozott) ahogy Ön szeretné, hogy a kamera képrögzítéseket végezzen..

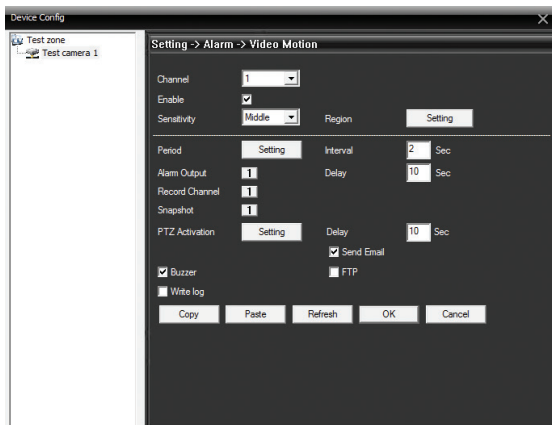


Alarm (Riasztóbeállítások):

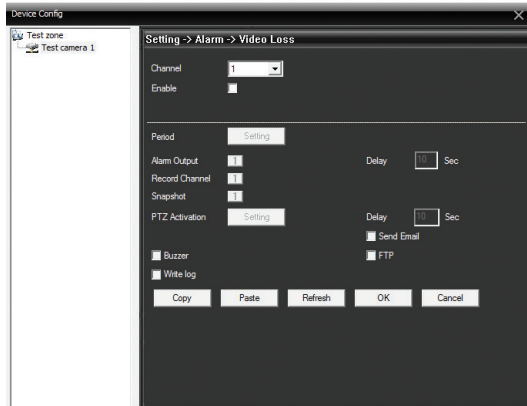


Video motion (Mozgásérzékelés):

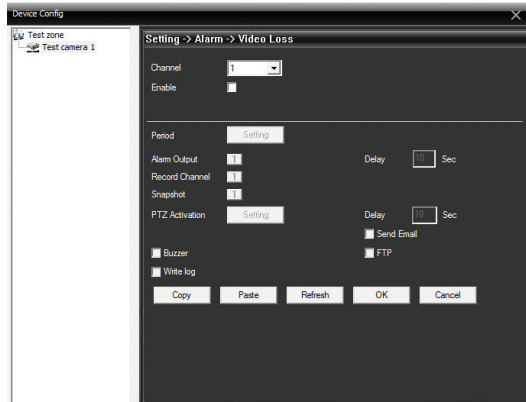
Aktiválja a mozgási vételezést ,érzékelés szintjét , időt stb.



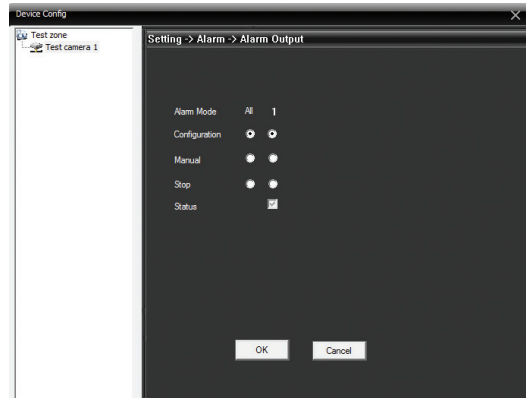
Video loss (Képhiányosság):



Alarm input:

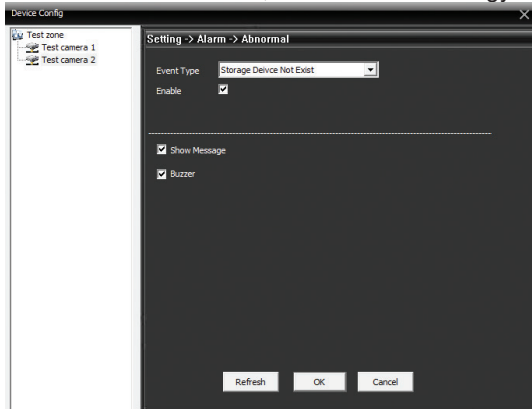


Alarm output:



Abnormal (Rendellenségek):

Aktiválja a riasztót készülék Riasztás engedélyezése, ha nincs tárolóeszköz, nincs tárolóhely a tárolóeszközön, nincs tárolóeszköz-hozzáférés, nincs IP-ütközés vagy nincs belső tároló.

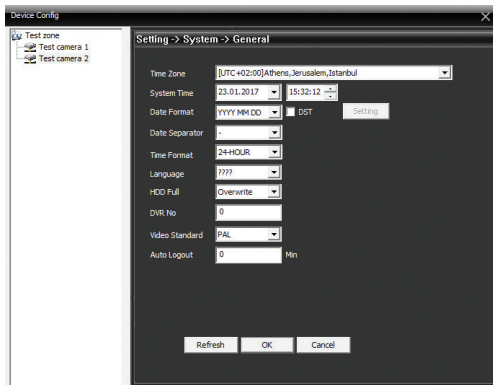


System (Rendszer):



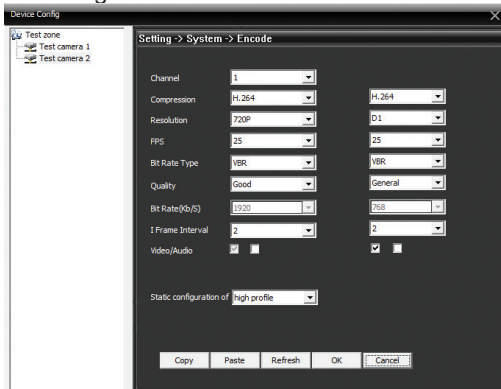
General:

Állítsa be az időzónát, az időt és a dátumot, a nyelvet stb.



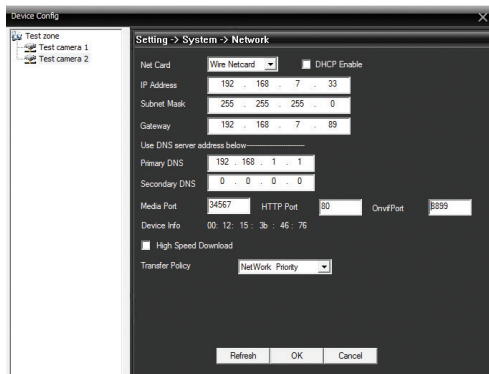
Encode (Kódolás):

Állítsák be a videó paramétereit : felbontás, tömörítés, képkockák másodpercenként, minőség, stb. az elsődleges és a másodlagos menühöz.

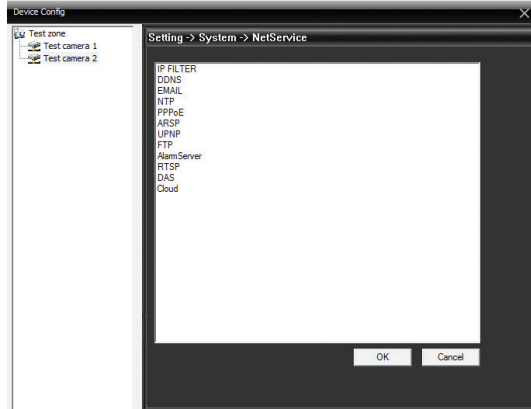


Network (Hálózat):

Állítsák be a hálózati paramétereit : IP, subnet mask, gateway, port stb. Jelölje be DHCP hogy automatikusan átvehesse őket a hálózattól.



NetService:



Email: állítsák be az email-t ahova a figyelmeztetési riasztásokat szeretné kapni.

The 'EMAIL' dialog box has the following fields: 'Enable' (checked), 'SMTP Server' (smtp.gmail.com), 'Port' (465), 'Need SSL' (checked), 'User Name' (test), 'Password' (masked), 'Sender' (test@gmail.com), 'Receiver' (test@gmail.com), and 'Title' (Alarm Message). At the bottom are 'Mail Testing', 'OK', and 'Cancel' buttons.

Megjegyzés:

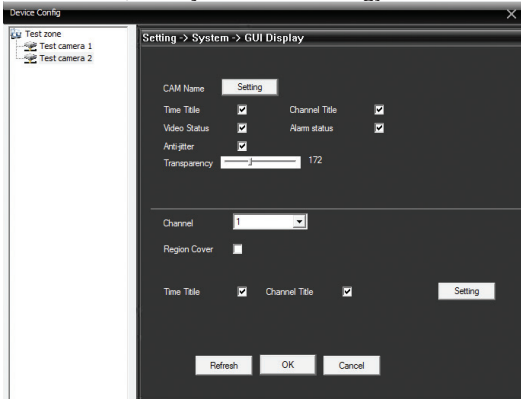
- Ajánljuk egy gmail fiók használatát
- Engedélyezzen engedélyt a nem biztonságos alkalmazásokhoz ("Allow less secure apps: ON") My Account részénél
- A Sender és a Receiver ugyanaz a fiók kell szerepeljen.

FTP: állítsák be azt a szervert ahová le szeretné menteni a riasztási figyelmeztetéseket

The 'FTP' dialog box has the following fields: 'Enable' (checked), 'Server Address' (pni.ro), 'Port' (21), 'User Name' (test), 'Password' (masked), 'Anonymous' (unchecked), 'File Length' (128 M), and 'DirName' (IP-Camera). At the bottom are 'OK' and 'Cancel' buttons.

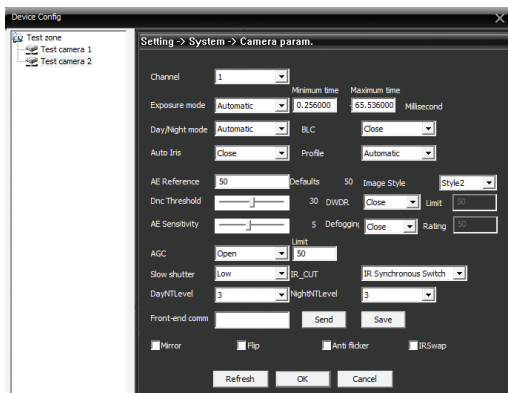
GUI Display (Graphical User Interface):

Állítsák be azokat az információkat, amelyet szeretné megjeleníteni az előnézeti ablakban.

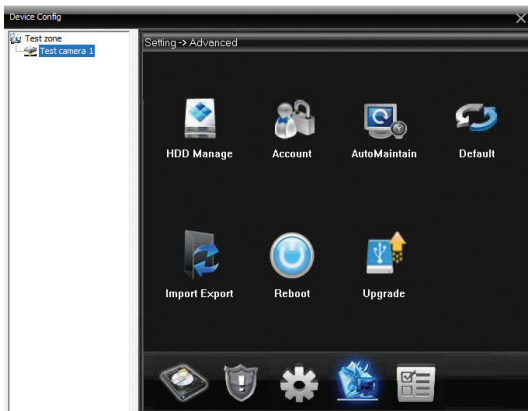


Camera param. (Kamera paramétereinek beállítása):

Állítsa be a képparamétereket, például érzékenységet, zársebességet stb.

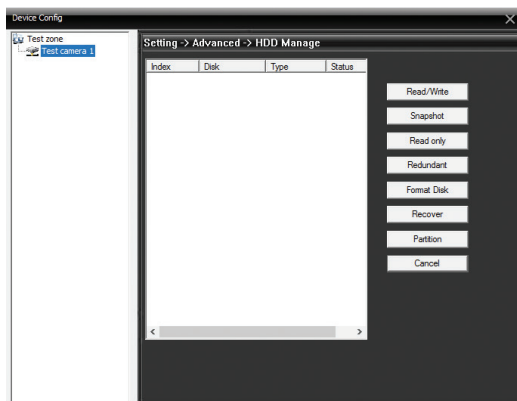


Advanced (Különleges beállítások):



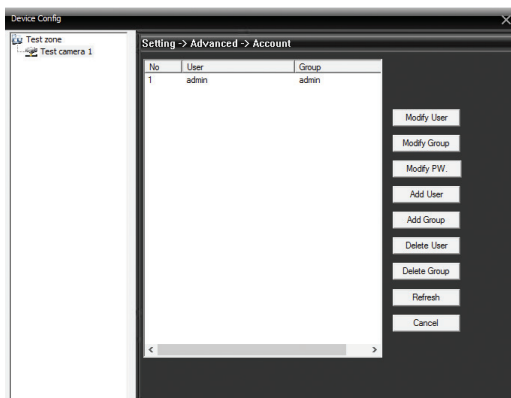
HDD Manage (Merevlemez beállítása):

Lehetővé teszi a merevlemez-kezelést, a formázást, a particionálást vagy a beállításokat.



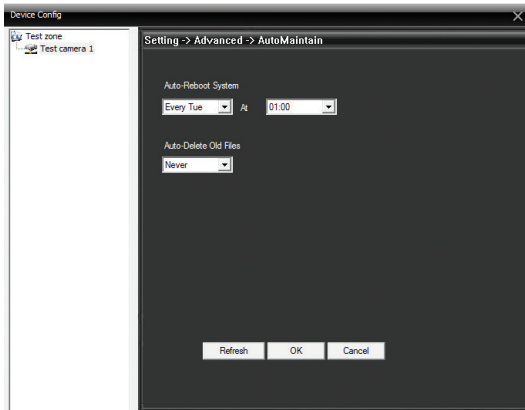
Account (Felhasználók):

Lehetővé teszi a felhasználók és csoportok kezelését, a jelszóváltást a csatlakoztatott eszközök



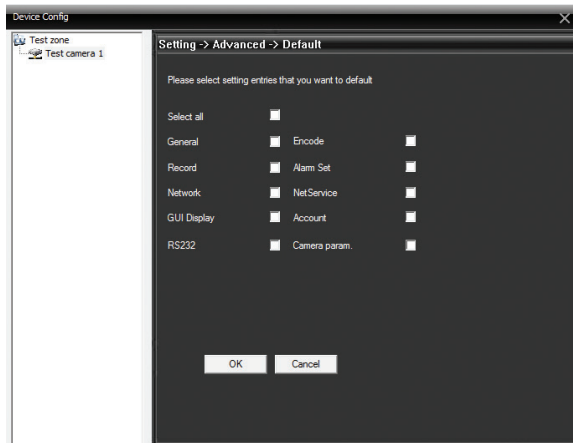
Auto maintain (Karbantartás):

Állítsa be a rendszer automatikus időszaksos újraindítását:



Default (Visszatérés a gyári beállításokat):

Jelölje ki a visszaállítandó beállításokat.



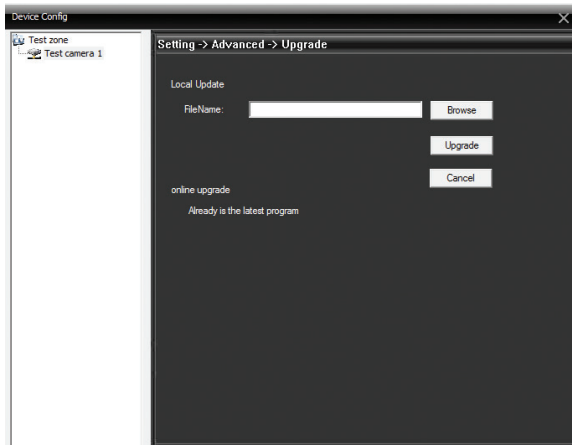
Import Export:

Importati sau exportati configurariile sistemului sau istoricul operatiunilor.

Reboot (újrarendítés):

Alkalmazás újrarendítése.

Upgrade (Firmware aktualizálás):



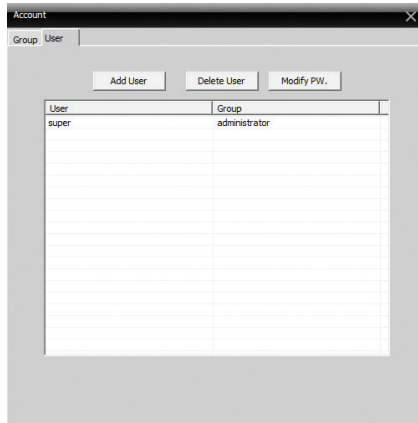
Info (Rendszerinformációk):

Információkat kapnak a merevlemezről, régi eseményekről és verzióról:



3.4 Account (Felhasználók):

Lehetővé teszi felhasználók és csoportok adminisztrálását.



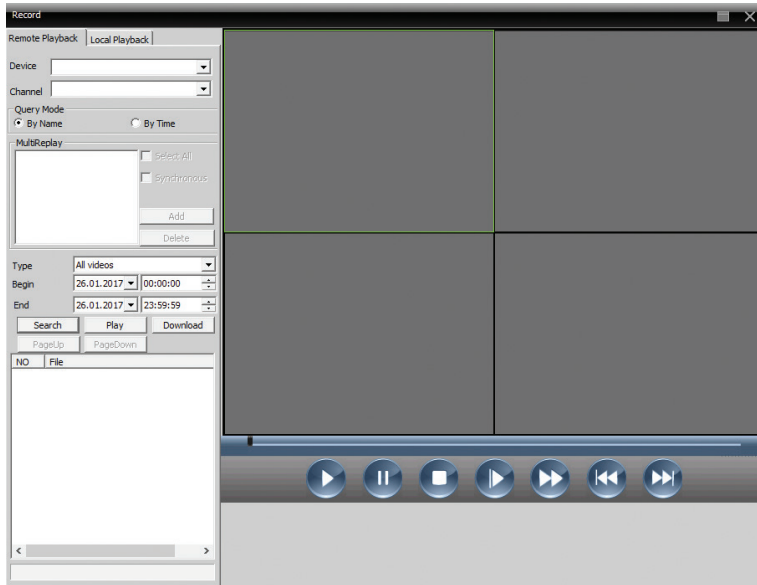
3.5 Local log (helyi régi események):

Megjeleníti a műveletek történetét a kiválasztott időszak alatt :

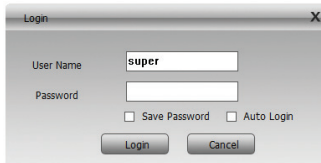
| No | Type | Date | Device | User | Describe |
|----|--------------|---------------------|---------------|-------|--------------------------------------|
| 1 | System Op... | 2017-01-23 09:27:55 | | super | User:super Login |
| 2 | Video | 2017-01-23 09:32:05 | Test camera | admin | Connect successful |
| 3 | Video | 2017-01-23 09:32:07 | Test camera | admin | Channel 1 Open OK |
| 4 | Video | 2017-01-23 09:40:46 | Test camera | admin | Channel 1 Closed successful |
| 5 | System Op... | 2017-01-23 09:40:46 | Test camera | admin | Disconnect Network is error |
| 6 | Video | 2017-01-23 09:41:01 | Test camera | admin | Connect failed Can't find the device |
| 7 | Video | 2017-01-23 09:42:50 | Test camera | admin | Connect successful |
| 8 | Video | 2017-01-23 09:56:07 | Test camera 2 | admin | Connect successful |
| 9 | Video | 2017-01-23 09:56:08 | Test camera 2 | admin | Channel 1 Open OK |
| 10 | Video | 2017-01-23 11:01:58 | Test camera | admin | Channel 1 Closed successful |
| 11 | Video | 2017-01-23 11:01:58 | Test camera | admin | Channel 1 Open OK |
| 12 | Video | 2017-01-23 11:02:04 | Test camera | admin | Channel 1 Closed successful |
| 13 | Video | 2017-01-23 11:02:04 | Test camera | admin | Channel 1 Open OK |
| 14 | Video | 2017-01-23 11:53:08 | Test camera | admin | Channel 1 Closed successful |
| 15 | Video | 2017-01-23 11:55:10 | Test camera | admin | Channel 1 Open OK |
| 16 | Device Co... | 2017-01-23 12:04:07 | Test camera 1 | admin | Record |
| 17 | Video | 2017-01-23 12:40:56 | Test camera | admin | Channel 1 Closed successful |
| 18 | System Op... | 2017-01-23 12:40:56 | Test camera | admin | Disconnect Network is error |
| 19 | Video | 2017-01-23 12:41:07 | Test camera | admin | Connect successful |
| 20 | Video | 2017-01-23 12:41:20 | Test camera 2 | admin | Channel 1 Closed successful |
| 21 | System Op... | 2017-01-23 12:41:22 | Test camera 2 | admin | Disconnect Network is error |
| 22 | Video | 2017-01-23 12:41:25 | Test camera 2 | admin | Connect successful |
| 23 | Video | 2017-01-23 13:54:19 | Test camera | admin | Channel 1 Closed successful |
| 24 | Video | 2017-01-23 13:54:43 | Test camera 2 | admin | Channel 1 Closed successful |
| 25 | System Op... | 2017-01-23 13:56:16 | Test camera | admin | Disconnect |
| 26 | Video | 2017-01-23 13:56:17 | Test camera 1 | admin | Connect successful |
| 27 | Video | 2017-01-23 13:56:17 | Test camera 1 | admin | Channel 1 Open OK |
| 28 | System Op... | 2017-01-23 13:56:17 | Test camera 2 | admin | Disconnect |
| 29 | Video | 2017-01-23 13:56:18 | Test camera 2 | admin | Connect successful |
| 30 | Video | 2017-01-23 13:56:19 | Test camera 2 | admin | Channel 1 Open OK |
| 31 | Video | 2017-01-23 13:57:08 | Test camera 2 | admin | Channel 1 Closed successful |
| 32 | Video | 2017-01-23 13:58:55 | Test camera 1 | admin | Channel 1 Closed successful |
| 33 | System Op... | 2017-01-23 13:59:10 | | super | Close CMS |

4. Playback (Vételezések lejátszása):

Válassza ki a kamerát és a helyi (PC vagy távoli) felvételek lejátszását vagy letöltését (az SD kártyán vagy a merevlemezen, a kameramodelltől függően):



5. Logout (Kilépés az alkalmazásból):



*Megjegyzés : Letilthatja a jelszó-kérélmét, ha kilép a fiókból **System - Local config - Base config**. Jelölje meg **"Password is required before exiting"** opciót.*